



*UK
Cable Maker
& Distributor*



www.eandjservices.co.uk

WELCOME to our new catalogue...

We are pleased to present our new catalogue and as you will see, as both a manufacturer and a stock holding distributor we are in a unique position to supply your cable requirements. Actually, not only cable, as a quick perusal of the catalogue will reveal many associated accessories, such as modules, data cabinets and a selection of new products.

A large part of our business remains the manufacture of cable and in recent months the factory has been re-located to new premises, nearer to our main warehouse and more suited to our operational requirements. We specialise in producing internal telephone cable, jumper wires, alarm cables and bespoke cables to your specifications. Our markets, apart from the UK, include Eire, Europe, the Caribbean and the Middle East.

A major re-structuring of the cable making division has resulted in decreased lead times, smaller manufacturing minimum order quantities and a greater through put of product. The focus remains on value for money and we endeavour to provide our customers with the cable they need, on time and at the best possible price.

The distribution division has also undergone change with a rationalisation of product lines stocked, new products being introduced, enhanced stock take procedures and later despatch of orders. Having introduced a two tier delivery system we have been able to reduce delivery costs and pass these savings on to you, the customer.

Orders are welcomed by phone, fax or e-mail and the same contact numbers apply to the distribution and manufacturing operations – it couldn't be simpler to place an order either for next day delivery or for manufacture.

Looking through the new catalogue, you will see that the popular e-mod range of products has grown, a section of new products has been added and more cables added to the range including external and armoured telephone cables, more Belden type cables and more data cables.

All the staff at E&J Services are committed to customer service, our aim is to supply good value product, technical support and to respond to customers' requirements promptly and efficiently. We have a comprehensive range of products for all types of customer – OEM, wholesaler, specialist distributor, exporter and installer

Speak to us for latest stock positions or manufacturing lead times and quantities.

We look forward to being of service

VOICE

DATA

SECURITY

POWER

FIBRE

PRIORITY ORDER LINE - 01733 311 592

CONTENTS

SECTION 1	Voice Products	4
SECTION 2	Data Products	8
SECTION 3	Voice & Data Cables	16
SECTION 4	Security Cables & Connectors	24
SECTION 5	Cables	29
SECTION 6	Installation Accessories	35
SECTION 7	Fibre Products	36
SECTION 8	New Products	38
SECTION 9	Cable Manufacture	41

PRIORITY FAX LINE - 01733 344 775

SECTION 1 - Line Jack Units

All dimensions in millimetres.

2 Series -c/w back box for surface mounting. Dimensions 68 x 68 x 29

2/1A	Master IDC
2/2A	PBX Master IDC
2/3A	Secondary IDC
2/4A	Master screw terminal
2/6A	Secondary screw terminal

Order Ref.	L 002
	L 003
	L 004
	L 005
	L 006



3 Series - single faceplate. Dimensions 86 x 86

3/1A	Master IDC
3/2A	PBX Master IDC
3/3A	Secondary IDC
3/4A	Master screw terminal
3/6A	Secondary screw terminal

Order Ref.	L 007
	L 008
	L 009
	L 010
	L 011



4 Series - double faceplate. Dimensions 86 x 86

4/1A	Master IDC
4/2A	PBX Master IDC
4/3A	Secondary IDC
4/4A	Master screw terminal
4/6A	Secondary screw terminal

Order Ref.	L 012
	L 013
	L 014
	L 015
	L 016



5 Series - double faceplate, 1 circuit. Dimensions 86 x 86

5/1A	Master IDC
5/3A	Secondary IDC
5/4A	Master screw terminal
5/6A	Secondary screw terminal

Order Ref.	L 019
	L 028
	L 017
	L 018



Metal Clad Inserts - for use in metal faceplates e.g. brass, chrome.

BT Secondary IDC, black
BT Secondary IDC, white
BT Master IDC, black
BT Master IDC, white

Order Ref.	L 033
	L 032
	L 031
	L 030

Miscellaneous sockets

NTE 5A
ADSL filter, fits directly onto NTE5A socket

Order Ref.	L 036
	L 037



SECTION 1 - Box Connections

Connection Boxes - Block Terminals - Dimensions 56mm x 41mm x 23mm.

77A	3 pair IDC - 3 pair IDC	<i>Order Ref.</i>
77B	3 pair screw - 3 pair screw	B 009
78A	4 pair IDC - 4 pair IDC	B 007
78B	4 pair screw - 4 pair screw	B 008



Internal Connection Boxes - designed to accept 237A strip connections.

201D	Complete with 2 x 237A strip connections	<i>Order Ref.</i>
251A	50 pair box c/w backmount frame & earth bar	B 004
301A	100 pair box c/w backmount frame & earth bar	B 005
		B 0065



Metal Box Connections - to accommodate 237A strip connections, not included

510	up to 340 pair box c/w hinged/reversible door, 34 way mounting frame, 2 earth clamps. Weight 13 Kgs. Dimensions 1000 x 300 x 130	<i>Order Ref.</i>
520	up to 680 pair box c/w hinged/reversible door, two 34 way mounting frames, 2 earth clamps. Weight 20 Kgs. Dimensions 1000 x 500 x 130	B 013
530	up to 1020 pair box c/w hinged/reversible door, three 34 way mounting frames, 2 earth clamps. Weight 29Kgs. Dimensions 1000 x 750 x 130	B 014
540	Up to 1360 pair box complete with hinged/reversible door, four 34 way mounting frames, 2 earth clamps. Weight 40kgs. Dimensions 1000 x 925 x 130	B 015
		B 016



External Connection Boxes - weatherproof boxes, with or without connectors

Ext Box	30 pair external box	<i>Order Ref.</i>
Ext Box	50 pair external box	B 018
Ext Box	100 pair external box	B 017
66B	screw terminal, 2/3 pair box. Dimensions 115 x 90 x 25	B 019
		B 022

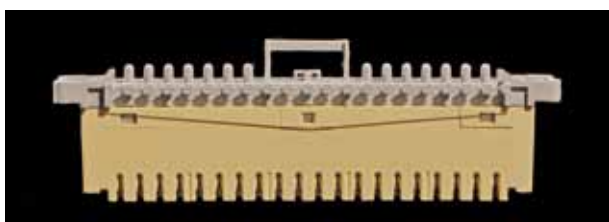
Distribution Frames - accept 237A strip connectors (not included).

108A	Single, 690 pair. Weight 16 Kgs. Dimensions 2004 x 285 x 150	<i>Order Ref.</i>
108A	Double 1380 pair. Weight 30 Kgs. Dimensions 2004 x 560 x 150	B 018
111B	690 pair. Weight 15 Kgs. Dimensions 2010 x 280 x 150	B 017
		B 019



Connection Box Accessories

237A	IDC terminal strip, 10 pair, inc. disconnection facility (237A also available in blue, green, red, brown)	<i>Order Ref.</i>
51A	Designation strip c/w plastic cover and paper label	B 011
8A	Jelly crimp (2 wire)	B 012
8B	Jelly crimp (3 wire)	B 020
		B 021



ORDER BEFORE 4pm - FOR SAME DAY DESPATCH

SECTION 1 - Back Boxes & Leads

E&J

Services Limited

Plastic back boxes - for 3,4 and 5 series Line Jack Units and data outlets.

Single	22 mm deep
Single	28 mm deep
Single	32 mm deep
Single	35 mm deep (trunking style)
Double	35 mm deep (trunking style)

Order Ref.

L 020
L 024
L 021
L 025
L 026



Line Cords - telephone plug to grommet and tags, light grey, other colours and lengths available.

4 way, 3 metre
4 way, 5 metre
6 way, 3 metre

Order Ref.

ASK
ASK
ASK



Plug - Plug Leads - telephone plug to telephone plug, light grey, other colours and lengths available.

4 way, 3 metre
4 way, 5 metre
6 way, 2 metre
6 way, 3 metre
6 way, 5 metre

Order Ref.

ASK
ASK
ASK
ASK
ASK

Extension Leads - telephone plug to telephone socket, grey or white.

4 way, 3 metre
4 way, 5 metre
4 way, 10 metre
4 way, 15 metre
4 way, 20 metre
4 way, 25 metre
6 way, 3 metre
6 way, 5 metre
6 way, 10 metre
6 way, 15 metre
6 way, 20 metre

Order Ref.

X 001
X 002
X 002/1
ASK
X 002/2
ASK
X 003
X 004/1
X 005
X 006
X 007



Miscellaneous Leads

BT431A - RJ11, 3 metre
RJ11 - BT631A, 3 metre
Modem lead, 3 metre
RJ45- 631A, 3 metre

Order Ref.

ASK
ASK
X 018
ASK



SCHEDULED & CALL-OFF ORDERS WELCOME

SECTION 1 - Miscellaneous

Plugs - 5 versions available.

431A	4 way, right hand
430A	4 way left hand
631A	6 way, right hand
630A	6 way, left hand

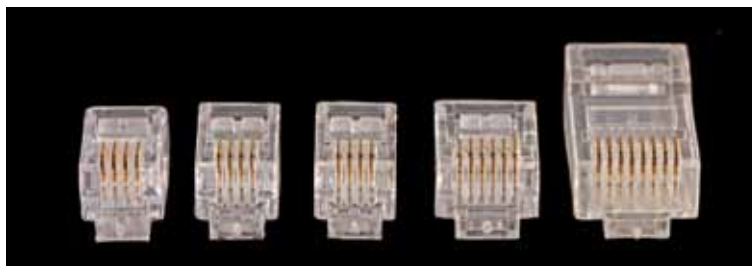
Order Ref.
A 002
ASK
A 003
ASK



Plugs – modular type

8P8C	RJ45 Cat5e
8P8C	RJ45 Cat6
8P8C	RJ45 Shielded
6P6C	
6P4C	
4P4C	Short latch
4P4C	Long latch

Order Ref.
A 039
A 040
A 041
A 042
A 043
A 044
A 045



Adaptors and Switches

4 way, double, compact
6 way, double, compact
BT - RJ11 adaptor
RJ11 Double Adaptor
RJ45 Double Adaptor
ADSL splitter

Order Ref.
A 004
A 005
ASK
A 037
A 038
A 057



Couplers

RJ45 - RJ45 coupler (cross wired, 1-8, 8-1)
RJ45 - RJ45 coupler (straight wired, 1-1, 8-8)
RJ11 - RJ11 coupler (cross wired, 1-6, 6-1)
RJ11 - RJ11 coupler (straight wired, 1-1, 6-6)

Order Ref.
D 020
D 021
A 006
A 007



SECTION 2 - Modular Products e-mod

E&J

Services Limited

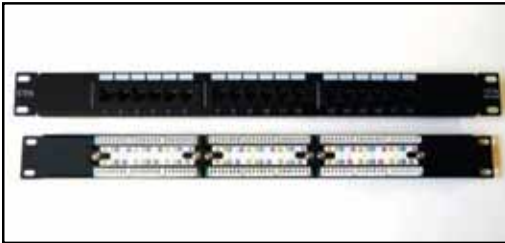
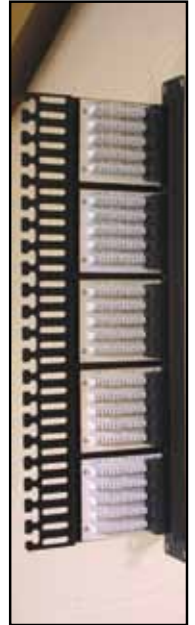
E&J own brand products for data, voice and media applications.

e-mod PATCH PANELS

- 12 port mini patch panel, Cat5E, 1u high, 245mm wide
 - 18 port, Cat5E, 1u high
 - 24 port, Cat5E, 1u high
 - 48 port, Cat5E, 2u high
 - 24 port, Cat6, 1u high
 - 48 port Cat6, 2u high
 - 25 port Voice Panel, 1u high
 - 50 port Voice Panel, 1u high
- (all panels come individually boxed with tie wraps, cage nuts and have Krone style connector blocks)*

Order Ref

- D 010
- D 011
- D 012
- D 013
- D 014
- D 015
- D 017
- D 018



CABLE MANAGEMENT

HINGED WALL BRACKETS

- 2u high 600mm x 300mm, black
- 3u high 600mm x 300mm, black
- 4u high 600mm x 300mm, black
- 6u high 600mm x 300mm, black

Order Ref

- E 080
- E 081
- E 082
- E 083



CABLE TIDY

- 1u Brush strip panel, black
- 1u, 5 ring cable tidy panel, black

Order Ref

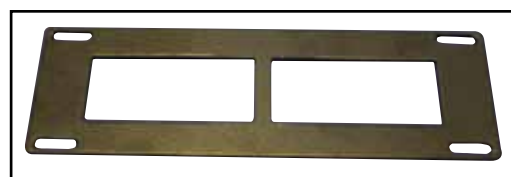
- E 0661
- E 065

SOHO SYSTEM

- Mini cabinet, 8u x 300mm x 210mm
- Cat 5e Patch panel, 245mm, 12 port
- Shelf, 2u x 245mm x 145mm
- Blank panel, 2u
- Module Mounting Plate (8 modules)

Order Ref

- E 084
- D 010
- ASK
- E 085
- E 087



TECHNICAL ADVICE - TELEPHONE 01733 311 592

SECTION 2 - Modular Products e-mod

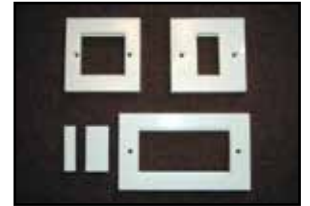
E&J

Services Limited

e-mod FACE PLATES and BLANKS

			Order Ref
Single faceplate, 1 gang, 1 module	86mm x 86mm		R 004
Double faceplate, 1 gang, 2 module	86mm x 86mm		R 005
Quad faceplate, 2 gang, 4 module	86mm x 147mm		R 006
Half blank	12.5mm x 50mm	B	R 001
Single blank	25mm x 50mm	B	R 002
Double blank	50mm x 50mm	B	R 003
6c face plate, 1 gang, 1 module	86mm x 86mm		R 025
6c face plate, 1 gang, 2 module	86mm x 86mm		R 026
6c face plate, 2 gang, 4 module	86mm x 147mm		R 027

*6c face plate accepts 6c modules - 37mm x 22 mm



e-mod BRUSH STRIP FRAMES

			Order Ref
1 Gang frame (use with single/double faceplate)	white brush		R 042
1 Gang frame (use with single/double faceplate)	black brush		R 042B
2 Gang frame (use with quad faceplate)	white brush		R 043
2 Gang frame (use with quad faceplate)	black brush		R 043B



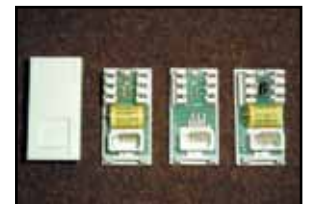
e-mod DATA MODULES

			Order Ref
RJ45 Cat5E module,	25mm x 50mm	B	R 007
RJ45 Cat6 module,	25mm x 50mm	B	R 009
ISDN terminated module, blue shutter	25mm x 50mm	B	R 010
RJ11 module	25mm x 50mm	B	R 008



e-mod VOICE MODULES

			Order Ref
Full master module	25mm x 50mm	B	R 011
Full master module, left hand	25mm x 50mm	B	R 012
PABX master module	25mm x 50mm	B	R 013
Secondary module	25mm x 50mm	B	R 014



OTHER MODULES

			Order Ref
LJ6C Cat5e	37mm x 22mm		R007X2
Cat6	37mm x 22mm		R009X1
Shielded Cat5e	25mm x 50mm		R007X1
Cat6	25mm x 50mm		ASK



B = module available in black

EXPORT ENQUIRIES WELCOME - 01733 311 592

SECTION 2 - Modular Products e-mod

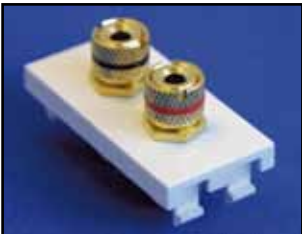
E&J

Services Limited

e-mod MEDIA MODULES

			Order Ref
TV outlet, female, PAL coaxial	25mm x 50mm	B	R 016
TV outlet, male PAL coaxial	25mm x 50mm	B	R 018
TV outlet, female, isolated	25mm x 50mm	B	R 0171
TV outlet, female, screened return, PAL coaxial	25mm x 50mm	B	R 019
Satellite TV outlet, F type	25mm x 50mm	B	R 015
BNC module, female	25mm x 50mm	B	R 021
Phono (RCA) female	25mm x 50mm	B	R 020
2 Phono (RCA) module (red/white)	25mm x 50mm	B	R 036
3 Phono (RCA) module (red/white/yellow)	25mm x 50mm	B	R 037
3 Phono (RCA) module (red/green/blue)	25mm x 50mm	B	R 038
Diplex module - TV/FM	50mm x 50mm	B	R 028
Triplex module - TV/Sat/FM	50mm x 50mm	B	R 029
Quadplex module - 2 x Sat/TV/FM	50mm x 50mm	B	R 030
Sky+ module - 2 x Sat/TV/FM/Screen Return	75mm x 50mm	B	R 031
Speaker module - 2 binding post	25mm x 50mm	B	R 032
Speaker module - 4 binding post	50mm x 50mm	B	R 033
Speaker module - 4 phono + 2 x 3.5mm socket	50mm x 50mm	B	R 034
HDMI module (tailed)	25mm x 50mm	B	R035
USB module (tailed)	25mm x 50mm	B	R044
VGA module (tailed)	25mm x 50mm	B	R045

B = module available in black



PRIORITY ORDER LINE - 01733 311 592

SECTION 2 - Data Cables

E&J

Services Limited

e-mod CAT5E PATCH LEADS

24 AWG RJ45-RJ45 booted patchleads, individually packaged, available in 7 different colours.

0.5 metre
1.0 metre
2.0 metre
3.0 metre
5.0 metre
10.0 metre
15.0 metre
20.0 metre

Order Ref

DC 5E 022
DC 5E 023
DC 5E 024
DC 5E 025
DC 5E 026
DC 5E 027
DC 5E 028
DC 5E 029



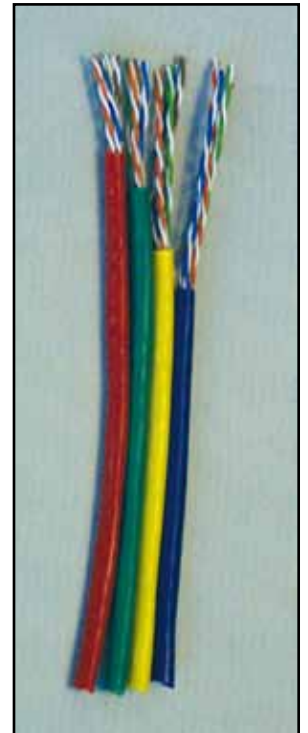
e-mod CAT6 PATCH LEADS

24 AWG RJ45-RJ45 booted patchleads, individually packaged, available in 7 different colours.

0.5 metre
1.0 metre
2.0 metre
3.0 metre
5.0 metre
10.0 metre
15.0 metre
20.0 metre

Order Ref

DC 6 022
DC 6 023
DC 6 024
DC 6 025
DC 6 026
DC 6 029Y10
DC 6 029Y15
DC 6 029Y20



When ordering patch leads using order ref, please add appropriate colour code to end of order ref.

BL=blue, R=red, Y=yellow, GR=green, GY=grey, BLK=black

e.g. 2 metre green patchlead would be order ref: DC 5E024GR

Non-standard lengths also available (e.g. 1.5 mtr/6mtr/8mtr/12/mtr/20mtr/25mtr. etc) please call sales office with your requirements for a quotation by return.

BULK CABLE - Cat5e unshielded (UTP)

4 pair, UTP, 24 awg, solid conductor, 305 metre box, grey
4 pair, UTP, 24 awg, solid conductor, 305 metre box, green
4 pair, UTP, 24 awg, solid conductor, 305 metre box, yellow
4 pair, UTP, 24 awg, solid conductor, 305 metre box, red
4 pair, UTP, 24 awg, solid conductor, 305 metre box, black
4 pair, UTP, 24 awg, stranded conductor, 305 metre box, black
4 pair, UTP, 24 awg, solid conductor, 305 metre box, blue
4 pair, UTP/LSF, 24 awg, solid conductor, 305 metre box
4 pair, UTP/LSOH, 24 awg solid conductor, 305 metre box
4 pair, UTP/RBS, 24 awg, direct burial, 500/1000 metre reel
4 pair, UTP/SWA, 24 awg, steel wire armoured, 500/1000 metre reel
4 pair, UTP/EXTERNAL, 24 awg, solid conductor, 500 or 1000 metre reel/ 305m box
25 pair, UTP/EXTERNAL, 24 awg, solid conductor 500m reel
25 pair UTP/LSOH, 24 awg solid conductor, 500m reel
(Externall/armoured 4pr and 25pr cables cut to length if required)

Order Ref

C 200
C 200G
C 200R
C 200BL
C 200BK
C 200STRBK
C 033BL
C 200LSFV
C 200LSOH
C 203RBS
C 203SWA
C 202PE
C 206PE
C 206LSOH



PRIORITY FAX LINE - 01733 344 775

SECTION 2 - Data Cables

BULK CABLE Cat5e screened (FTP)

4 pair, FTP, 24 awg, solid conductor, 305 metre box
4 pair, FTP/LSF, 24 awg, solid conductor, 305 metre box
4 pair, FTP/LSOH, 24 awg, solid conductor, 305 metre box
4 pair, FTP/PE, 24 awg, external, 500/1000 metre reel

Order Ref
C 204
C 204LSF
C 204LSOH
C 204PER

BULK CABLE Cat6 unshielded (UTP)

4 pair, UTP, 24 awg, solid conductor, 305 metre box
4 pair, UTP/LSF, 24 awg, solid conductor, 305 metre box
4 pair, UTP/LSOH, 24 awg, solid conductor, 305 metre box
4 pair, UTP/PE, 24 awg, external, 500/1000 metre reel

Order Ref
C 207
C 207LSF
C 207LSOH
C 207PER

BULK CABLE Cat6 screened (FTP)

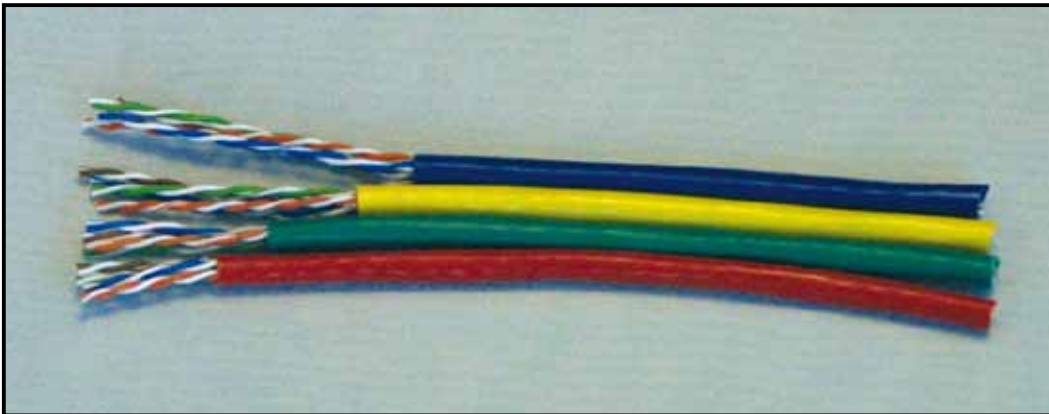
4 pair, FTP, 24 awg, solid conductor, 305 metre box
4 pair, FTP/LSOH, 24 awg, solid conductor, 305 metre box
4 pair, SFTP/LSOH, 24 awg, 500/1000 metre reel
4 pair, SSTP, 24 awg, 500/1000 metre reel

Order Ref
C 208
C 208LSOH
C 209SFTP
C 209SSTP

BULK CABLE Cat6a

Available on 500m reels. Ring for information and prices.

(Cables pvc sheathed unless stated otherwise)



SECTION 2 - Data Products

MODULAR FRAMES

Plastic modular frames to fit metal plates and accommodate the e-mod range of modules.

Modular frame, 74mm x 74mm, 2 module, white
Modular frame, 74mm x 74mm, 2 module, black
Modular frame, 148mm x 74mm, 4 module, white
Modular frame, 148mm x 74mm, 4 module, black

Order Ref.

R 022
R 022BK
R 023
R 023BK

RJ - BT Adaptors - a series of baluns manufactured by E&J Services Ltd.

RJ45 - BT adaptors - c/w 100mm leads.

RJ45 - BT full master
RJ45 - BT PABX master
RJ45 - BT secondary (slave)
RJ45 - ISDN

Order Ref.

D 004
D 005
D 006
D 007

RJ11 - BT adaptors - c/w 100mm leads

RJ11 - BT full master
RJ11 - BT PABX master
RJ11 - BT secondary (slave)

Order Ref.

D 001
D 002
D 003

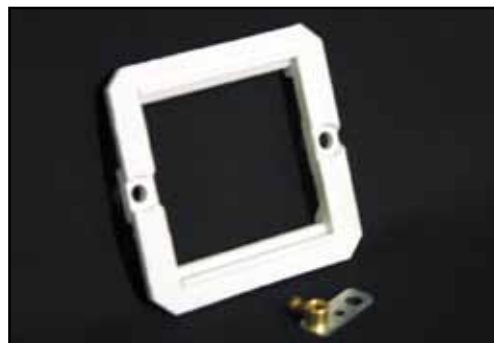
ECONOMISERS

Data/data
Data/voice
Voice/voice

Order Ref.

D 022
D 023
D 024

Should you require an alternative wiring scheme or different length of lead on the adaptor please contact our sales office and we will quote immediately for your specific requirements. No minimum order quantity for this service.



ORDER BEFORE 4pm - FOR SAME DAY DESPATCH

SECTION 2 - Enclosures

E&J

Services Limited

All dimensions in millimetres.

Cabinets - a range of floor standing and wall mounting cabinets.

Floor Standing

12u x 600w x 600d
18u x 600w x 600d
21u x 600w x 600d
33u x 600w x 600d
39u x 600w x 600d
42u x 600w x 600d
45u x 600w x 600d

12u x 600w x 800d
21u x 600w x 800d
27u x 600w x 800d
33u x 600w x 800d
39u x 600w x 800d
42u x 600w x 800d
45u x 600w x 800d

27u x 800w x 600d
39u x 800w x 600d
42u x 800w x 600d

27u x 800w x 800d
39u x 800w x 800d
42u x 800w x 800d
45u x 800w x 800d

Order Ref.

E 001
E 10966F
E 003
E 005
E 009
E 011
E 013

E 00168
E 00268
E 00868
E 00568
E 0968
E 01168
E 01368

E 00386
E 00986
E 01186

E 00388
E 00988
E 01188
E 01388



Floor standing cabinets include as standard, 4 adjustable mounting profiles, removable steel panels, lockable steel framed glass door, steel rear door, raised top for ventilation, 4 adjustable feet, earth bonding kit and cage nuts.

Wall Mounting

6u x 600w x 450d
9u x 600w x 450d
12u x 600w x 450d
15u x 600w x 450d
18u x 600w x 450d
21u x 600w x 450d

6u x 600w x 550d
9u x 600w x 550d
12u x 600w x 550d
15u x 600w x 550d
18u x 600w x 550d

Order Ref.

E 101645
E 103645
E 105645
E 107645
E 109645
E 66264

E 161655
E 103655
E 105655
E 107655
E 109655



Wall mounting cabinets include lockable doors and side panels, Perspex or toughened glass doors. Various other depths of cabinet available e.g 400mm, 500mm. Call sales office for competitive quote and availability on these and other cabinets such as swing or hinged wall cabinets.

SCHEDULED & CALL-OFF ORDERS WELCOME

SECTION 2 - Cabinet Accessories

All dimensions in millimetres.

Cabinet Accessories – to complement our range of cabinets

Shelves:	19" plain vent	450mm deep	Order Ref. E 042
	19" plain vent	570mm deep	E 045
	19" telescopic, vented	450mm deep	E 049
	19" telescopic, vented	570mm deep	E 050
	19" telescopic, vented	720mm deep	E 048
	19" front mounted, 1u x 200mm		E 051
Power distribution units:	4 way vertical		E 030
	5 way vertical		E 031
	6 way vertical		E 034
	8 way vertical		E 035
	10 way vertical		E 037
	12 way vertical		E 038
	4 way horizontal		E 032
	6 way horizontal		E 033
	8 way horizontal		E 036
	12 way horizontal		E 039
2 way roof mounted fan tray		E 054	
4 way roof mounted fan tray		E 052	
6 way roof mounted fan tray		E 053	
Plinths:	600mm x 600mm		E 056
	600mm x 800mm		E 057
	800mm x 600mm		E 058
	800mm x 800mm		E 0588
Heavy duty castors		E 060	
Baying kit		E 061	
Earth bonding kit		E 041	
1u horizontal cable tidies		E 065	
1u brush strip panel		E 0661	
1u blank panel		E 066	
2u blank panel		E 067	
3u blank panel		E 068	
4u blank panel		E 069	
Adjustable feet (set of 4)		E 059	
Cage nuts and bolts (pack of 50)		E 062	
CABLE TRAY various sizes/lengths		ASK	
Server Cabinets - a range of floor standing server cabinets			
39u x 800w x 900d		E 00989	
42u x 800w x 900d		E 01369	
45u x 600w x 900d		E 01389	
45u x 800w x 900d		E 09989	
45u x 800w x 1000d		E 013810	
47u x 800w x 1000d		E 015810	

If you require other sizes of server cabinet, not shown above, call the sales office with your requirements. Accessories for server cabinets – plinths, cable tray, shelves etc; available – ring the sales team for current price and availability



SECTION 3 - Voice and Data Cables

E&J

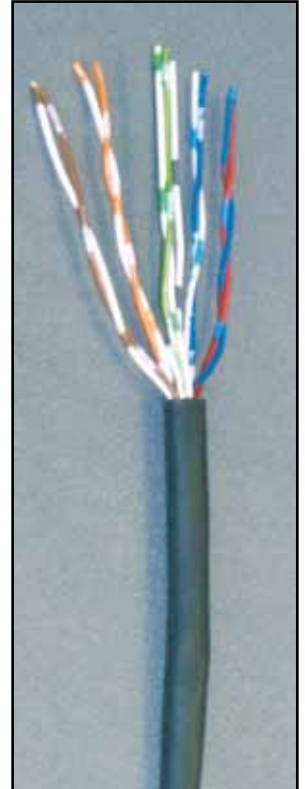
Services Limited

CW1308 internal telephone cable - twisted multipair cable, 0.5mm diameter solid copper conductor, pvc insulated and pvc sheathed in white or black.

2 pair black, 100 metres
 2 pair black, 200 metres
 2 pair white, 100 metres
 2 pair white, 200 metres
 3 pair black, 100 metres
 3 pair black, 200 metres
 3 pair white, 100 metres
 3 pair white, 200 metres
 4 pair black, 100 metres
 4 pair black, 200 metres
 4 pair white, 100 metres
 4 pair white, 200 metres
 6 pair black, 100 metres
 6 pair black, 200 metres
 6 pair white, 100 metres
 6 pair white, 200 metres
 10 pair black, 100 metres
 10 pair black, 200 metres
 10 pair white, 100 metres
 10 pair white, 200 metres
 10 pair + E black, 100 metres
 10 pair + E black, 200 metres
 10 pair + E white, 100 metres
 10 pair + E white, 200 metres
 20 pair black, 100 metres
 20 pair black, 200 metres
 20 pair white, 100 metres
 20 pair white, 200 metres
 20 pair + E black, 100 metres
 20 pair + E black, 200 metres
 20 pair + E white, 100 metres
 20 pair + E white, 200 metres
 25 pair white, 100 & 200 metres
 25 pair + E white, 100 & 200 metres
 32 pair + E white
 32 pair, white
 40 pair + E white, 100 & 200 metres or cut to length
 50 pair + E white, 100 & 200 metres or cut to length
 100 pair + E white

Order Ref.

C 002B1
 C 002B2
 C 002W1
 C 002W2
 C 003B1
 C 003B2
 C 003W1
 C 003W2
 C 004B1
 C 004B2
 C 004W1
 C 004W2
 C 006B1
 C 006B2
 C 006W1
 C 006W2
 C 010B1
 C 010B2
 C 010W1
 C 010W2
 C 010EB1
 C 010EB2
 C 010EW1
 C 010EW2
 C 020B1
 C 020B2
 C 020W1
 C 020W2
 C 020EB1
 C 020EB2
 C 020EW1
 C 020EW2
 C 025W
 C025EWR
 C 032EWR
 C032WR
 ASK
 C 050EWR
 C 100EWR



Other pair combinations can be made to customers requirement (e.g. 12 pair, 16 pair, 40 pair) subject to a minimum manufacturing quantity. Above cables can also be produced with LSF or LSOH outer sheath subject to MOQ.

25pair and above – cable can be cut to length, in multiples of 50 metres.

TECHNICAL ADVICE - TELEPHONE 01733 311 592

SECTION 3 - Voice and Data Cables

E&J

Services Limited

CW 1308B - internal/external telephone cable 0.5mm diameter solid copper conductor pvc insulated, insulated earth wire, PETP taped, tinned copper drainwire, aluminium taped moisture barrier, black LSF outer sheath.

10 pair + earth, 1Km and 500 metre reels or cut to length
20 pair + earth, 1Km and 500 metre reels or cut to length
50 pair + earth, 1Km and 500 metre reels or cut to length
100 pair + earth, 1Km and 500 metre reels or cut to length

Order Ref.
C 166
C 167
C 168
C 169



CW 1128 external telephone cables - multipair, 0.5mm solid plain copper conductor, pvc insulated, jel filled, black polyethylene outer sheath. Suitable for installation in ducts or directly buried in suitably prepared ground.

5 pair, 1,000 & 500 metre drums or cut to length
10 pair, 1,000 & 500 metre drums or cut to length
20 pair, 1,000 & 500 metre drums or cut to length
50 pair, 500 metre drums or cut to length
100 pair, 500 metre drums or cut to length

Order Ref.
C 140
C 141
C 142
C 144
C 145

CW1128/1179 jel filled and screened external telephone cable.

20 pair, 500m reels or cut to length
100 pair, 500m reels or cut to length

Order Ref
C 158R
C 160R

CW1128/1198 jel filled and steel wire armoured (SWA) external telephone cable.

5 pair, 100,200 & 500m reels or cut to length
10 pair, 100,200 & 500m reels or cut to length
20 pair, 100,200 & 500m reels or cut to length
50 pair, 100,200 & 500m reels or cut to length
100 pair, 500m reels or cut to length

Order Ref
C 151R
C 152R
C 153R
C 154R
C 155R

CW1128/1252 jel filled cable incorporating separate steel support wire for aerial applications in fig 8 configuration.

10 pair, 500m reels or cut to length
20 pair, 500m reels or cut to length
50 pair, 500m reels or cut to length
100 pair, 500m reels or cut to length

Order Ref
C 147R
C 148R
C 149R
C 150R

All CW1308B and CW1128 type cables can be cut to length, to nearest multiple of 50 metres.
No cutting charge.

EXPORT ENQUIRIES WELCOME - 01733 311 592

SECTION 3 - Voice and Data Cables

E&J

Services Limited

Screened internal telephone cable - to CW1308 (AFAA) twisted multipair cable, 0.5mm diameter solid copper conductor, pvc insulated, aluminium foil screened, white pvc sheath.

2 pair screened, 500 metre reels or cut to length
3 pair screened, 500 metre reels or cut to length
4 pair screened, 500 metre reels or cut to length
10 pair + E screened, 100 & 200 metre reels
20 pair + E screened, 100 & 200 metre reels
25 pair screened 100 & 200 metre reels

Order Ref.
ASK
C 175
C 176
ASK
ASK
C 025WSCR

CW1308 Screened internal telephone cable

6 pair screened, 100 & 200 metre reels
10 pair screened, 100 & 200 metre reels
20 pair screened, 100 & 200 metre reels

Order Ref.
C 177
C 178
C 179

CW 1311 - line cordage - copper wire conductor version for ease of termination, pvc insulated parallel cores, oversheathed in pvc with a "D" cross section.

4 way, black, 100, 200 and 500 metre reels
4 way, grey, 100, 200 and 500 metre reels
4 way, white, 100, 200 and 500 metre reels
6 way, grey, 100, 200 and 500 metre reels
6 way, white, 100, 200 and 500 metre reels
6 way, black, 100, 200 and 500 metre reels

Order Ref.
C 130D4B
C 130D4G
C 130D4W
C 131D6G
C 131D6W
C 131D6B

CW 1109 - jumper wire - 0.5mm solid copper conductor, pvc insulated.

2 wire, blue/yellow, 100, 200 & 500 metre reels
2 wire, green/black, 100, 200 & 500 metre reels
2 wire, red/white, 100, 200 & 500 metre reels
2 wire, pink/grey, 100, 200 & 500 metre reels
2 wire, blue/white, 100, 200 & 500 metre reels
2 wire, red/black, 100, 200 & 500 metre reels
2 wire, black/yellow, 100, 200 & 500 metre reels

Order Ref.
C 106BY
C 107GB
C 109RW
C 105PG
C 103BW
C 102RB
C 109BLY

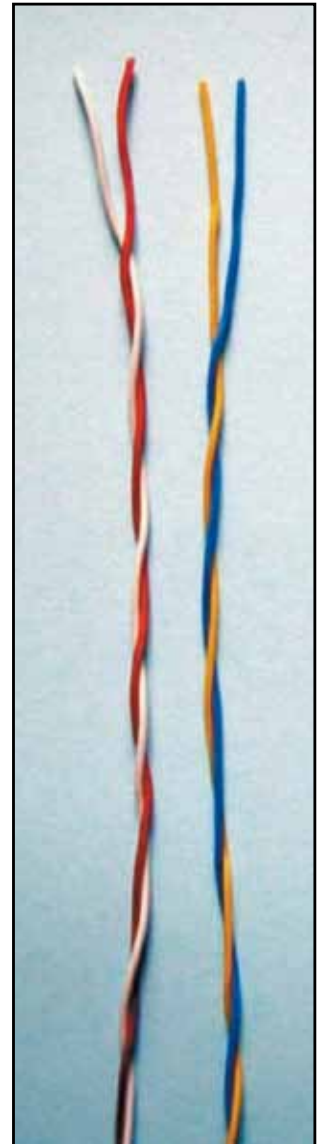
CW1109- jumper wire

CW1109 jumper wire – many other colour combinations available, call to confirm stock or to discuss your particular requirements. We also offer 4 wire and 5 wire jumper wire.

CW1423- jumper wire – replaces CW1257 jumper wire

2 wire, blue/yellow, 100,200 & 500 metre reels
2 wire, pink/grey, 100,200 & 500 metre reels
2 wire, red/white, 100,200 & 500 metre reels

Order Ref.
C 121BY
C 122PG
C 123RW



PRIORITY ORDER LINE - 01733 311 592

SECTION 3 - Voice and Data Cables

CW 1044 - functional earth wire - plain copper conductor, cream pvc sheath, supplied on 100 metre reels.

1.5mm
2.5mm
4.0mm
6.0mm
10.0mm
16.0mm

Order Ref.
C 500
C 501
ASK
ASK
C 502
ASK

Dropwire to CW 247 & CW 1378 - 2 core, 2 pair, 3 pair and 4 pair cable, 0.5mm solid plain copper conductor, pvc insulated, polyethylene outer sheath. The cables incorporate steel strength members and are therefore self-supporting (not dropwire 6).

Dropwire no. 6, 2 core, to CW 247, 100 & 200 metre reels
Dropwire no. 10, 2 pair, to CW 1378, 200 & 350 metre reels
Dropwire no. 11, 3 pair, to CW 1378, 200 metre reels
Dropwire no. 14, 4 pair, to CW 1378, 200 metre reels
See Section 6 for dropwire clamps and brackets.

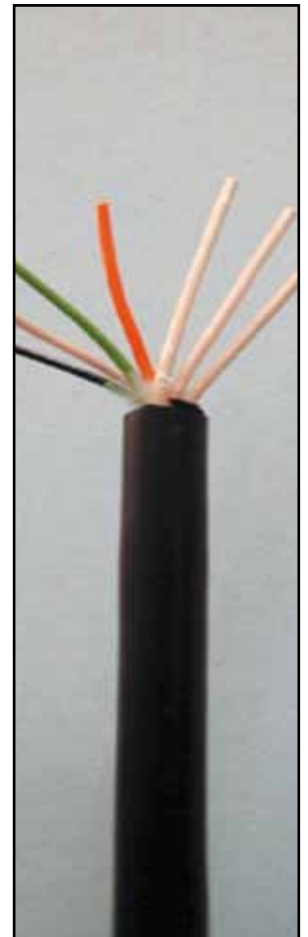
Order Ref.
C 180
C 181
C 182
C 183

FCC flat line cordage, stranded tinsel conductor, pvc insulated and over-sheathed. Flat profile for under-carpet installation or for use in lead manufacture

4 way black, 500m reels
4 way grey, 500m reels
4 way white, 500m reels
6 way black, 500m reels
6 way grey, 500m reels
6 way white, 500m reels
8 way black, 500m reels
8 way grey, 500m reels
8 way white, 500m reels

Shorter reels available if required

Order Ref
C 134F4B
C 134F4G
C 134F4W
C 135F6B
C 135F6G
C 135F6W
C 136F8B
C 136F8G
C 136F8W



SECTION 3 - Voice and Data Cables

E&J

Services Limited

Armoured telephone cable to ESI 09-6 - multipair, 0.9mm diameter, solid copper conductor, pvc insulated, polyester taped, black pvc sheath, galvanised steel wire armour and black pvc overall sheath. Suitable for ducts or direct burial in prepared ground.

5 pair, cut to length
10 pair, cut to length
20 pair, cut to length
50 pair, cut to length
100 pair, cut to length

Order Ref.
ASK
ASK
ASK
ASK
ASK

ESI cables also available with 0.6mm diameter conductor and in 0.9mm version screened and armoured. Other pair sizes available, telephone 01733-311592 for further information.

CW 1293 -internal telephone cable - multipair, 0.5mm diameter solid copper conductor, pvc insulated, pvc sheath in cream or grey, 100 metre or 200 metre reels.

1 pair
Quad
3 pair
4 pair
6 pair
15 pair
20 pair
25 pair
50 pair

Order Ref.
ASK
ASK
ASK
ASK
ASK
ASK
ASK
ASK

Data co-axials - 50 ohm co-axials.

RG 58 c/u LSF, 50 ohm, single braid screen, 250 metre reels

Order Ref.
C 234LSF5



We can offer a cable design and manufacture service.
If you require an existing cable in a non-standard colour or perhaps a different outer sheath then we can quote. Ring our sales office on 01733-311592 with your exact requirements and we will be pleased to quote.

We reserve the right to change specifications of cables without prior notice in line with any new specifications and changes which may be introduced.

EXPORT ENQUIRIES WELCOME - 01733 311 592

SECTION 3 - Acome Data Cables

E&J

Services Limited

Category 5E data cables - high quality cables often exceeding the requirements of Cat. 5E, manufactured by a leading French manufacturer - ACOME.

24 AWG solid conductor (unless otherwise indicated.) 100 ohm, 250MHz.

- 4 pair UTP, pvc, 305 metre box
- 4 pair UTP, LSOH, purple, 305 metre box
- 4 pair UTP, LSOH, ivory, 305 metre box
- 4 pair FTP, pvc, 305 metre box
- 4 pair FTP, pvc, 500 metre reel
- 4 pair FTP, LSOH, 500 metre reel
- 2 x 4 pair UTP, pvc, 500 metre reel
- 4 pair UTP, pvc, stranded conductor, 500 metre reel

Order Ref.

- ASK
- ASK
- ASK
- ASK
- ASK
- ASK
- ASK
- ASK



Also included in the ACOME range are 25, 50, 100 and 200 pair cables together with bundled 4 pair cable, up to 8 x 4 pairs in UTP, FTP and LSOH versions.

Call 01733-311592 for information on price and delivery lead times.

350 MHz Cable (Cat 6) – available in UTP, FTP (overall foil screened) or SFTP (overall foil and braid) versions with either pvc or LSOH outer jacket. 24 AWG solid conductor, 100 ohm.

- 4 pair, UTP, pvc, 1,000 metre reel
- 4 pair, UTP, pvc, 305 metre box
- 4 pair, UTP, LSOH, 1,000 metre reel
- 4 pair, UTP, LSOH, 305 metre box
- 4 pair, FTP, pvc, 500 metre reel
- 4 pair, FTP, LSOH, 500 metre reel
- 4 pair, SFTP, pvc, 500 metre reel
- 4 pair, SFTP, LSOH, 500 metre reel

Order Ref.

- ASK
- ASK
- ASK
- ASK
- ASK
- ASK
- ASK
- ASK



600MHz. Cable - available in SSTP (foil screened twisted pairs with overall braid screen) in both pvc and LSOH outer jacket. 23 AWG solid (0.6) conductor, 100 ohm.

- 4 pair, SSTP, pvc, 1,000 metre reel
- 4 pair, SSTP, LSOH, 1,000 metre reel

Order Ref.

- ASK
- ASK



1 GHz. Cable - available in SSTP, LSOH version as standard. 22 AWG (0.64) conductor, 100 ohm.

- 4 pair, SSTP, LSOH, 1,000 metre reel

Order Ref.

- ASK



Specification sheets and test certificates available on request.

PRIORITY ORDER LINE - 01733 311 592

SECTION 4 - Security Cables and Connectors

E&J

Services Limited

Alarm cables - unscreened 7/0.2mm tinned copper conductor, pvc insulated, white pvc outer sheath . Maximum voltage 50V r.m.s. maximum current per core 1 amp. To BS 4737.

4 core, 100 metre reels
6 core, 100 metre reels
8 core, 100 metre reels
12 core, 100 metre reels

Order Ref.
C 266
C 264
C 262
C 260

Alarm cables -screened 7/0.2mm tinned copper conductor, pvc insulated, overall aluminium foil screen, white pvc outer sheath. Voltage & current as per unscreened.

4 core, 100 metre reels
6 core, 100 metre reels
8 core, 100 metre reels
12 core, 100 metre reels

Order Ref.
C 271
C 270
C 269
C 268

Alarm Cables LSF - 7/0.2mm, tinned copper conductor, pvc insulated, white LSF outer sheath.

4 core, 100 metre reels
6 core, 100 metre reels
8 core, 100 metre reels
12 core, 100 metre reels

Order Ref.
C 267
C 265
C 263
C 265

If you require either screened or unscreened cables in longer lengths or different sheath colours, please contact our sales department on 01733-311592.

Alarm cables - external 7/0.2mm, tinned copper conductor, pvc insulated, black polyethylene or polypropylene outer sheath. These cables are suitable for use in ducts or directly buried in prepared ground.

6 core direct burial foil screened, 500 metre reels or cut to length
12 core direct burial foil screened, 500 metre reels or cut to length

Order Ref.
C 296PP
C 290PP

6 core duct grade unscreened, 500 metre reels or cut to length
12 core duct grade unscreened, 500 metre reels or cut to length
8 core duct grade unscreened, 500 metre reels or cut to length

ASK
ASK
C 262BPE

TCCA alarm cable – 7/0.2mm tinned copper coated aluminium (TCCA), white pvc sheath, 100 metre reels unless stated otherwise

6 core black, 100 metre reel
6 core black, 200 metre reel
6 core white, 100 metre reel
8 core white, 100 metre reel

Order Ref.
C 275B1
C 275B2
C 275W1
C 274W1



PRIORITY FAX LINE - 01733 344 775

SECTION 4 - Security Cables and Connectors

Table of cable run distances

The following table gives an indication of the lengths over which a particular co-axial cable can be run, without the need to use launch amplifiers, on a CCTV installation. This table is intended to be a guide and is given in good faith, based on our knowledge of the cables. We do not give a guarantee as to the accuracy of this table, due to factors outside our control and peculiar to each individual installation. The type of outer sheath, pvc, polyethylene or non-metallic armour is not stated as this has no effect on the results.

CABLE TYPE Ref. no.	ATTENUATION (dB/100 mtrs.)					RUN DISTANCE(mtrs.)	
	5MHz	10MHz	30MHz	50MHz	100MHz	6dB loss	9dB loss
RG 59 c/u	2.2	3.2	5.8	7.5	10.9	270	390
URM 70	2.3	4.7	8.2	10.6	15.2	250	380
CO-AX 12 PE	1.6	2.4	4.4	6.1	8.1	330	500
RG 6	1.8	2.4	3.7	4.4	6.1	330	500
CT 100 (or equivalent)	1.3	1.9	3.1	4.3	6.1	450	680
RG 11 a/u	1.2	2.0	3.6	4.7	6.9	490	740
CT 125 (or equivalent)	1.1	1.5	2.5	3.4	4.9	540	810
CT 167 (or equivalent)	0.8	1.1	1.9	2.6	3.7	740	1100
CT 233 (or equivalent)	0.6	0.8	1.4	1.9	2.7	990	1480

Further technical information, if required, can be obtained from our sales office on 01733-311592. Specification and test information supplied to order and for your export sales, Certificates of Conformity can be issued.

SECTION 4 - Security Cables and Connectors

E&J

Services Limited

75 ohm co-ax cable - used for CCTV and TV distribution.

RG 59 - c/u version has plain copper 1/0.58mm diameter centre conductor, solid dielectric, plain copper braid screen to Mil C-17, pvc outer sheath. RG 59 c/u PE is suitable for external use, including direct burial in suitably prepared ground and the LSF version is the low smoke and fume internal cable.

RG 59 c/u, black, 100 metres
RG 59 c/u, black, 200 metres
RG 59 c/u, black, 500 metres
RG 59 c/u, PE, black, 250 metres
RG 59 LSF, black, 500 metres
RG 59 LSF, black, 200 metres
RG59c/u LSF, black, 100 metres

Order Ref.
C 211B1
C 211B2
C 211B5
C 212BPER
C 213LSF5
C 213LS52
C 213LSF1

RG 59 - b/u version has copper clad steel 1/0.58mm diameter centre conductor, solid dielectric, plain copper braid screen (80/0.10mm) pvc outer sheath.

RG 59 b/u, black, 100 metres
RG 59 b/u, black, 200 metres
RG59b/u LSF, black, 100 metres

Order Ref.
C 210B1
C 210B2
C 210B1LSF1

URM 70 - plain stranded copper conductor (7/0.19mm) solid dielectric, plain copper braid screen with 94% coverage, pvc outer sheath. Limited fire hazard version available in LSF.

URM 70, LSF, black, 500 metres

Order Ref.
C 216

Co-ax 12 - 0.75mm diameter plain copper centre conductor, solid dielectric, plain copper foil and copper braid screen, polyethylene outer sheath. This is an external cable which can be directly buried in suitably prepared ground.

Co-ax 12 PE, black, 500 metres

Order Ref.
C 214R

RG 6 - plain copper conductor, 1mm diameter, airspaced dielectric, double screened - foil and braid, black pvc outer sheath. Available in white or brown sheath to order, traditionally used for satellite t.v. applications.

RG 6, black, 100 metres
RG 6, black, 250 metres

Order Ref.
C235B1
C235BR

RG 179 LSF - a miniature 75 ohm co-ax, overall diameter 2.5mm. Stranded (7/0.12mm) or solid conductor, polyethylene dielectric, braid screen and lsf outer sheath in black.

RG 179, stranded conductor, black lsf sheath, 100 metres
RG 179, solid conductor, black lsf sheath, 100 metres

Order Ref.
C 233STR
C 233



ORDER BEFORE 4pm - FOR SAME DAY DESPATCH

SECTION 4 - Security Cables and Connectors

E&J

Services Limited

CTS 100 - plain copper conductor, 1mm diameter, airspaced dielectric, copper foil and copper braid screened, black pvc or LSF (low smoke and fume) outer sheath.

CTS 100, black, 100 metres
 CTS 100, black, 250 metres
 CTS 100, black, 500 metres
 CTS100, white, 100 metres

Order Ref.
 C 220P1
 C 220P25
 C 220P5
 C 220P11

CTS 100, LSF, black 100 metres
 CTS 100 LSF, black, 250 metres
 CTS 100 LSF, black, 500 metres

C 221L1
 C 221L25
 C 221L5

CTS 100 PE, black, 500 metres

C 222PER

CT 100 RBS, green, direct burial, 500 metres

C 224R

CTF 100 - plain copper conductor, 1mm diameter, foam dielectric, copper foil and copper braid screened, black LSF outer sheath.

CTF 100 LSF, foam filled, 100 metres
 CTF 100 LSF, foam filled, 250 metres
 CTF 100 LSF, foam filled, 500 metres

Order Ref
 C 223FF1
 C 223FF25
 C 223FF5

RG 11 - stranded tinned copper conductor, 7/0.41mm, solid dielectric, plain copper braid screen, black pvc outer sheath.

RG 11 a/u, LSF black lsf sheath, 500 metres
 RG 11a/u, RBS, direct burial, 1000 metre reels
 RG11a/u, SWA, steel wire armoured, 500 metre reels

Order Ref.
 C 215
 C 215RBS
 ASK

CTS 125 - solid plain copper conductor, 1.25mm diameter, airspaced dielectric, plain copper foil and plain copper braid screened, pvc, tsf, pe or RBS outer sheath. Suitable for internal, external and direct burial applications respectively.

CTS 125 pvc, black, 500 metres

Order Ref.
 C 225R

CTS 125 PE, black, 1000 metres
 CTS 125 PE, black, 500 metres
 CTS 125 PE, black, 250 metres

C 227KM
 C 2275
 C 227R

CTS 125 RBS, green, 1000 metres
 CTS 125 RBS, green, 500 metres
 CTS 125 RBS, green, 250 metres

C 228KM
 C 2285
 C 228R

CTS 125 LSF, black, 250 metres
 CTS 125 LSF, black, 500 metres

C 2265
 C 2265

CTS 167 - solid plain copper conductor, 1.67mm diameter, airspaced dielectric, plain copper foil and plain copper braid screened, pe or RBS outer sheath, suitable for external and direct burial purposes.

CTS 167 PE, black, 500 metres
 CTS 167 RBS, green, 500 metres
 CTS 167 LSF, black, 250 metres

Order Ref.
 C 229R
 C 2315
 C 230R



SCHEDULED & CALL-OFF ORDERS WELCOME

SECTION 4 - Composite Cables

75 ohm co-axes with additional cores for power and telemetry.

RG59a/u + 2 cores, shotgun style, 100 metres
2 x 0.75mm cores, white pvc sheath

Order Ref.
C 243W1

RG59a/u + 2 cores, shotgun style, 200 metres
2 x 0.75mm cores, white pvc sheath

C 243W2

RG59a/u + 2 cores, shotgun style, 100 metres
2 x 0.75mm cores, black pvc sheath

C 242B1

RG59a/u + 2 cores, shotgun style, 200 metres
2 x 0.75mm cores, black pvc sheath

C 242B2

RG59a/u + 2 cores, shotgun style, LSF 100 metres
2 x 0.75mm cores, black LSF sheath

C 244B1

RG59a/u + 2 cores, shotgun style, LSF 100 metres
2 x 0.75mm cores, white LSF sheath

C 245W1

RG59b/u + 2 cores, shotgun style, 100 metres
2 x 0.5mm cores, black pvc sheath

C 240B1

RG59b/u + 2 cores, shotgun style, 200 metres
2 x 0.5mm cores, black pvc sheath

C 240B2

RG59b/u + 2 cores, shotgun style, LSF 100 metres
2 x 0.5mm cores, black LSF sheath

C 241B1

RG59b/u + 2 cores, shotgun style, LSF 200 metres
2 x 0.5mm cores, black LSF sheath

C 241B2

URM70 + 4 cores, black, LSF circular sheath,
2 x 0.5mm + 2 x 1mm cores, black LSF sheath

C 246BLSF

12 core + co-ax, BPT style, (VCM 130)
75 ohm coax + 9 x 0.75mm + 3 x 1mm cores

C 243W2



SECTION 4 - Connectors

CONNECTORS - a range of quality BNC connectors for use with co-axial cables.

- BNC 75 ohm male crimp, for RG59 (all versions)
- BNC 75 ohm male crimp, for RG59 (miniature)
- BNC 75 ohm male twist-on, for RG6/CT100/CT100LSF
- BNC 75 ohm male twist-on, for RG59
- BNC 75 ohm male crimp, for CT100
- BNC 75 ohm male crimp, for CT125PE
- BNC 75 ohm male crimp, for CT125RBS
- BNC 75 ohm male crimp, for RG11
- BNC 75 ohm male crimp, for RG179
- BNC 75 ohm male clamp connector
- BNC 50 ohm male crimp, for RG58
- BNC double male connector

- BNC 75 ohm female crimp, for RG59 (all versions)
- BNC 75 ohm female crimp, for RG179
- BNC double female (through or barrel connector)
- BNC in-line female/female bulkhead connector
- BNC female isolated bulkhead connector

- BNC T piece adaptor, female/male/female
- BNC T piece adaptor, female/female/female
- BNC Y adaptor, female/male/female
- BNC F adaptor, female/male/female

Order Ref.

- A 008
- A 021
- A 010
- A 011
- A 012
- A 026
- A 027
- A 028
- A 019
- A 031
- A 032
- A 014

- A 009
- A 020
- A 013
- A 015
- A 022

- A 016
- ASK
- A 017
- A 018



• A 008



• A 009



• A 010



• A 023



• A 016



• A 013



• A 031



• A 028



• A 018



• A 017

SECTION 4 - Composite Cables

E&J

Services Limited

CONNECTORS - a range of BNC accessories, adaptors and F-type connectors.

BNC male - Phono male adaptor
 BNC male - Phono female adaptor
 BNC female - Phono male adaptor
 BNC male - F-type female adaptor
 BNC female - F-type male adaptor
 BNC right angle adaptor, female/male

BNC Patch panel, 16 way, loaded
 BNC Patch panel, 32 way, loaded

Strain relief boot for RG59, black
 Strain relief boot for RG59, blue
 Strain relief boot for RG59, red
 Strain relief boot for RG179, red

BNC male - BNC male flylead, booted, 0.5 metre
 BNC male - BNC male flylead, booted, 1 metre
 BNC male - BNC male flylead, booted, 2 metre
 BNC male - BNC male flylead, booted, 3 metre

Speaker binding post - red
 Speaker binding post - white

F connector, twist-on, for RG6/CT100
 F connector, crimp type, for RG6/CT100
 F connector, twist-on, for CT125PE
 F connector, crimp, RG11/CT 125

F-type compression connector (FM202) for CT125RBS
 F-type compression connector (FM72) for CT167RBS

F-F in-line connector, double female
 F right angled adaptor, male/female

F-type Patch panel, 16 way, loaded

XLR connector, 3 pin male
 XLR connector, 3 pin female

Our range of connectors continues to expand if you do not see the specific connector you require, please call our sales desk on 01733-311592



Order Ref.

A 023
 A 024
 A 025
 A 029
 A 029F
 A 030



• A 030

A 055
 ASK



A 033
 A 034
 A 035
 A 036

• A 029

A 051
 A 052
 A 053
 A 054



A 059
 A 060

A 046
 A 048
 A 047
 A 063

• A 033

ASK
 ASK



A 049
 A 050

A 056

A 061
 A 062

• A 051



• A 050



• A 049

EXPORT ENQUIRIES WELCOME - 01733 311 592

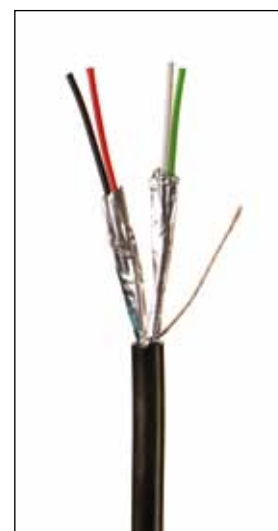
SECTION 5 - Cables

E&J

Services Limited

Belden equivalent cables - cables which are generally physically and electrically identical to Belden cable, identified with the same Belden number, but supplied on metric length reels.

	<i>Order Ref.</i>
8442, LSF, 1 pair unscreened, 22 awg low smoke and fume sheath, 500 metre reels	C 400
8451 LSF, 1 pair foil screen, 22awg low smoke and fume sheath, 500 metre reels	C 401
8471 LSF, 1 pair unscreened, 16 awg low smoke and fume sheath, 500 metre reels	C402
8719 LSF, 1 pair foil screen, 16 awg low smoke and fume sheath, 500 metre reels	C 403
8723 LSF, 2 pair individual foil screen, 22 awg low smoke and fume sheath, 500 metre reels	C 405G5
8723 LSF, 2 pair individual foil screen, 22 awg low smoke and fume sheath, 250 metre reels	C 405G2
8723 LSF, 2 pair individual foil screen, 22 awg low smoke and fume sheath, 100 metre reels	C 405G1
8723 PE, 2 pair individual foil screen, 22 awg pe sheath for external applications 500 metre reels	C 405PE5
8723 RBS, 2 pair individual foil screen, 22 awg RBS sheath for direct burial applications 500 metre reels	C 407RBS
8723 SWA, 2 pair individual foil screen, 22 awg steel wire armoured for direct burial applications 500 metre reels	C 407SWA
8760 LSF, 1 pair foil screen, 18 awg low smoke and fume sheath, 500 metre reels	C 4085
8760 LSF, 1 pair foil screen, 18 awg low smoke and fume sheath, 250 metre reels	C 408R
8760 PE, 1 pair foil screen, 18 awg pe sheath, 250 metre reels	C 408PE
8761 LSF, 1 pair foil screen, 22 awg low smoke and fume sheath, 500 metre reels	C 4095
8762 LSF, 1 pair foil screen, 20awg low smoke and fume sheath, 500 metre reels	C 4410
8777 LSF, 3 pair individual foil screen, 22 awg low smoke and fume sheath, 500 metre reels	C 412R
8777 PE, 3 pair indiv. foil screen, 22awg, pe sheath for external/direct burial applications. 500 metre reels	C 411PER
8778 LSF, 6 pair individual foil screen, 22 awg low smoke and fume sheath, 500 metre reels	C 414R



PRIORITY ORDER LINE - 01733 311 592

SECTION 5 - Cables

E&J

Services Limited

Belden equivalent cables - continued

9368 LSF, 2 pair individual foil screen, 18 awg
low smoke and fume sheath, 500 metre reels

9402 LSF, 2 pair individual foil screen, 20 awg
low smoke and fume sheath, 500 metre reels

9418 LSF, 4 core overall foil screen, 18 awg
low smoke and fume sheath, 500 metre reels

9501 LSF, 1 pair foil screen, 24 awg
low smoke and fume sheath, 500 metre reels

9502 LSF, 2 pair overall foil screen, 24 awg
low smoke and fume sheath, 500 metre reels

9502 LSF, 2 pair overall foil screen, 24 awg
low smoke and fume sheath, 100 metre reels

9503 LSF, 3 pair overall foil screen, 24 awg
low smoke and fume sheath, 500 metre reels

9503 PE, 3 pair overall foil screen, 24 awg
pe sheath, 500 metre reels

9504 LSF, 4 pair overall foil screen, 24 awg
low smoke and fume sheath, 500 metre reels

9504 LSF, 4 pair overall foil screen, 24 awg
low smoke and fume sheath, 100 metre reels

9504 PE, 4 pair overall foil screen, 24 awg
PE sheath, external/duct grade, 500 metre reels

9506 PE, 6 pair overall foil screen, 24 awg
pe sheath, 500 metre reels

9506 LSF, 6 pair overall foil screen, 24 awg
low smoke and fume sheath, 500 metre reels

9508 LSF, 8 pair overall foil screen, 24 awg
low smoke and fume sheath, 500 metre reels

9510 LSF, 10 pair overall foil screen, 24 awg
low smoke and fume sheath, 500 metre reels

9534 LSF, 4 core overall foil screen, 24 awg
low smoke and fume sheath, 500 metre reels

9536 LSF, 6 core overall foil screen, 24 awg
low smoke and fume sheath, 500 metre reels

9538 LSF, 8 core overall foil screen, 24 awg
low smoke and fume sheath, 500 metre reels

9540 LSF, 10 core overall foil screen, 22 awg
low smoke and fume sheath, 500 metre reels

Order Ref.

C 420R

C 422R

C 424R

C 4305

C 4315

C 431R

C 4325

C 432PE

C 4335

C 433R

C 433PE

C 435PER

C 435R

C 438R

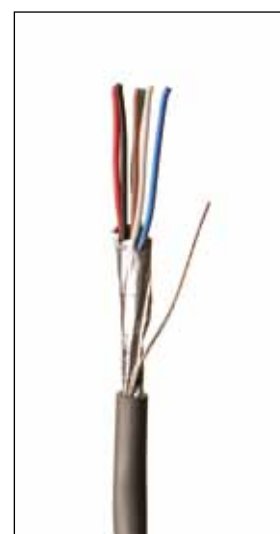
C 439R

C 445

C 446

C 447

C 448



PRIORITY FAX LINE - 01733 344 775

SECTION 5 - Cables

E&J

Services Limited

Belden equivalent cables - continued

9728 LSF, 4 pair, individual foil screen pairs, 24 awg
low smoke and fume sheath, 500 metre reels

Order Ref.
C 449

9729 LSF, 2 pair individual foil screen, low capacitance
24 awg, low smoke and fume sheath, 500 metre reels

C 450

9730 LSF, 3 pair, individual foil screen pairs, 24 awg
low smoke and fume sheath, 500 metre reels

C 451

9829 LSF, 2 pair overall foil and braid screen, 24 awg
low smoke and fume sheath, 500 metre reels

C 455

9841 LSF, 1 pair foil and braid screen, 24 awg
low smoke and fume sheath, 500 metre reels

C 461

9842 LSF, 2 pair overall foil and braid screen, 24 awg
low smoke and fume sheath, 500 metre reels

C 462

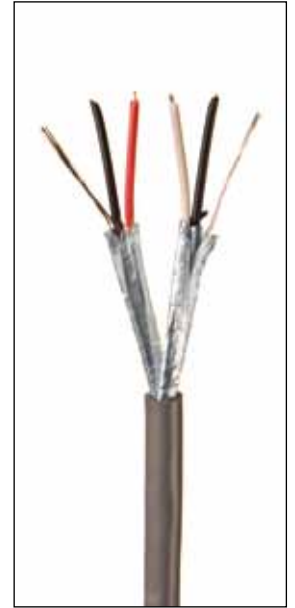
9842 PE, 2 pair overall foil and braid screen, 24 awg
pe sheath for external/direct burial application, 500 metre reels

C 462PE

The Belden cables listed represent those which we are most often asked to supply. If you have a requirement for a cable which is not listed we will be pleased to quote. Cables can be supplied on alternative length reels to those shown if required.

Many Belden equivalent cables stocked on 500m reels but can be cut to length (within reason) at no extra charge. Please contact the Sales Office for further details and availability.

Any of the above LSF cables can be supplied in PE, LSOH or armoured versions, Subject to minimum order quantity (MOQ). Please contact sales office with your requirements.



SECTION 5 - Cables

E&J

Services Limited

Defence Standard cables - multicore flexible cables often used in computers, military vehicles, signalling and telemetry applications.

DEF. STAN. 61-12 part 4 - miniature and sub-miniature sizes. 7/0.20mm tinned copper conductors, pvc insulated, black pvc sheathed (unless indicated otherwise). Type A is unshielded, type C is overall tinned copper braid shielded.

UNSHIELDED

7-2-2A	2 core
7-2-3A	3 core
7-2-4A	4 core
7-2-6A	6 core
7-2-8A	8 core
7-2-12A	12 core
7-2-20A	20 core

Order Ref.
C 300AR
C 299AR
C 298AR
C 296AR
C 294AR4
C 290A1
C 301AR

Cables listed above normally supplied on 100 metre reels, longer lengths available if required

OVERALL BRAID SHIELDED

7-2-4C	4 core
7-2-4C	4 core white sheath
7-2-6C	6 core
7-2-8C	8 core
7-2-12C	12 core LSF
7-2-20C	20 core
7-2-36C	36 core
7-2-50C	50 core

Order Ref.
C 298CR
C 298CWR
C 296CR
C 294CR
C 290CLS5
ASK
ASK
ASK

Cables listed above normally supplied on 100 metre reels, longer lengths available if required.

DEF. STAN. 61-12 part 5 - standard size cable. 16/0.20mm tinned copper conductors, pvc insulated, black pvc sheath (unless indicated otherwise). Type A is unshielded, type C is overall tinned copper wire braid shielded and type S is overall foil shielded.

UNSHIELDED

16-2-2A	2 core
16-2-3A	3 core
16-2-4A	4 core
16-2-6A	6 core
16-2-8A	8 core
16-2-12A	12 core

Order Ref.
C 328AR
C 327AR
C 326AR
C 324AR
C 322AR
C 320AR

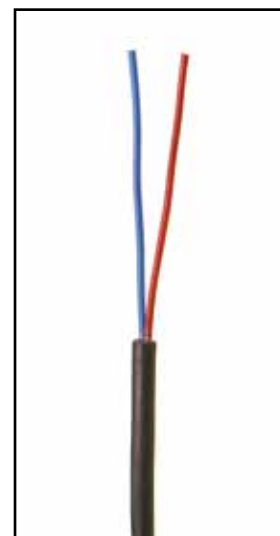
Cables listed above normally supplied on 100 metre reels, longer lengths available if required

OVERALL BRAID SHIELDED

16-2-2C	2 core
16-2-4C	4 core
16-2-8C	8 core
16-2-12C	12 core
16-2-25C	25 core
16-2-36C	36 core
16-2-50C	50 core

Order Ref.
C 328CR
C 326CR
C 322CR
C 320CR
ASK
ASK
ASK

Cables listed above normally supplied on 100 metre reels, longer lengths available if required



ORDER BEFORE 4pm - FOR SAME DAY DESPATCH

SECTION 5 - Cables

E&J

Services Limited

OVERALL FOIL SCREENED

16-2-6S 6 core, grey sheath
 16-2-8S 8 core, grey sheath
 16-2-12S 12 core, grey sheath

Order Ref.
 C 324SR
 C 322SR
 C 320SR

Cables listed above normally supplied on 100 metre reels, longer lengths available if required

EXTERNAL AND DIRECT BURIAL

7-2-12S PP, 12 core overall foil screen, PP sheath
 7-2-6S PP, 6 core overall foil screen, PP sheath
 7-2-8A PE, 8 core unscreened, external grade PE sheath
 7-2-6A PE, 6 core unscreened, external grade PE sheath
 7-2-10S LSF, 10 core overall foil screen, LSF sheath

Order Ref.
 C 290PP5
 C 296PP5
 C 294APER
 C 296APE5
 C 292LSF

Booklet cables.

Mains flexes, - stranded copper conductors, pvc insulated, pvc sheathed in various colours, ref 2192Y, 2182Y, 2183Y, 3183Y. Supplied on 100 metre reels. To BS 6500

2182Y, 0.5mm 2 core white 300/300V
 2182Y, 0.5mm 2 core black 300/300V
 2182Y, 0.75mm 2 core white 300/300V
 2182Y, 0.75mm 2 core black 300/300V
 2183Y, 0.5mm 3 core white 300/300V

Order Ref.
 C 340W
 C 340B
 C 341W
 C 341B
 C 342W

2192Y, 0.5mm 2 core oval white 300/300V
 2192Y, 0.75mm 2 core oval white 300/300V
 2192Y, 0.75mm 2 core oval black 300/300V

C 343W
 C 344W
 C 344B1

3182Y, 0.75mm 2 core white 300/500V
 3182Y, 0.75mm 2 core black 300/500V
 3182Y, 1.0mm 2 core white 300/500V
 3182Y, 1.0mm 2 core black 300/500V
 3182Y, 1.5mm 2 core white 300/500V

C 344W
 C 344B
 C 346W
 C 346B
 C 348W

3183Y, 0.75mm 3 core white 300/500V
 3183Y, 0.75mm 3 core black 300/500V
 3183Y, 1.0mm 3 core white 300/500V
 3183Y, 1.0mm 3 core black 300/500V
 3183Y, 1.5mm 3 core white 300/500V
 3183Y, 1.5mm 3 core black 300/500V
 3183Y, 2.5mm 3 core white 300/500V

C 345W
 C 345B
 C 347W
 C 347B
 C 349W
 C 349B
 C 350W

3184Y, 1.0mm 4 core white 300/500V

C 347W4

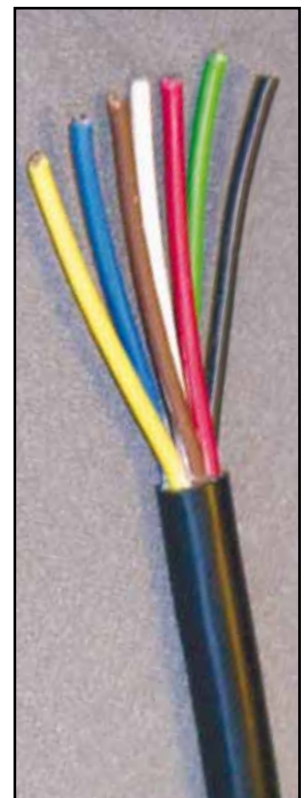
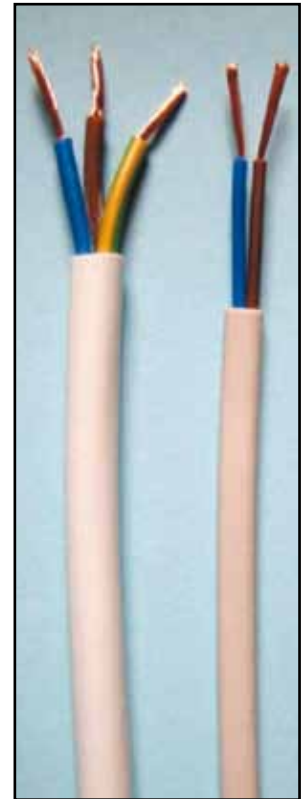
0.75mm/1mm/1.5mm 2 and 3 core flexes available in LSOH sheath – 3182B and 3183B

For any other flexible not listed (3192Y,3182Y,3093Y,3184Y,3185Y,3192Y) please contact sales office for price and availability. Longer reel lengths (200m/500m) can be supplied.

Armoured mains cable - copper conductors, XLPE insulated, pvc bedding, single steel wire armoured and black pvc outer sheath. 600/1000 volt, to BS 5467.

Available P.O.A. from the sales office in various configurations – 2 core to 7 core and in conductor sizes 1.5mm up to 185mm. These cables cut to length.

Above cables supplied on 500 metre or 1,000 metre reels or cut to length. Larger conductor sizes and higher core counts available - p.o.a.



SCHEDULED & CALL-OFF ORDERS WELCOME

SECTION 5 - Cables

Fire alarm cable. 100 metre reels.

1.5mm, 2 core + e, red
1.5mm, 4 core + e, red

Order Ref.
C 470
C 471

Larger conductor sizes and higher core count available - p.o.a.

Fire alarm cables

Enhanced fire cables available P.O.A.

1.5mm and 2.5mm, 2 core+ earth and 4core+ earth

Fire cable also available on longer reel lengths up to 500 metres

Retractable Leads – curly leads extending up to 6 times closed length, depending on outer sheath material.

3 core 0.75mm, 400mm closed length
8 core 0.75mm, 1.2 metre closed length

Order Ref
X 012
X 013

Many other core sizes and conductor combinations available to special order.

PLEASE REMEMBER - we are constantly reviewing our stock holding policy and increasing our range of cables supplied from stock. It is impossible to list here all the types of cable which we have access to.

However the following list will give you an idea of the types of cable which have been supplied over the last 12 months by E&J in addition to those detailed in this catalogue:

- Control flexes - YY, CY, SY
- Arctic Grade mains flex
- EPR/CSP mains flex
- Armoured multicore to BS 6346
- Automotive cables
- 0361 Welding cable
- Coil End Lead
- BS 5308 Instrumentation cables
- Microphone & audio cables
- Thermocouple extension & compensating cable
- Silicone insulated wires
- Custom built cables to customer's own specification



The message is simple - if you have a cable requirement, give E&J a call. You will be assured of friendly service at all times.

making cables our business

NO ACCOUNT – NO PROBLEM – we accept Visa or Mastercard

SECTION 6 - Installation Accessories

E&J

Services Limited

Installation tools - a selection of tools for telecom and other applications.

	<i>Order Ref.</i>
Crimp tool, 6p4c	T 001
Crimp tool RJ11/RJ45	T 002
Crimp tool RJ45	T 003
Crimp tool, 4p4c/4p2c	T 004
Crimp tool, 8p8c/6p6c/4p4c	T 005
Crimp tool, F type (RG11/RG6/RG59)	T 021
Crimp tool BNC, for RG59	T 016
Crimp tool BNC, for CT100	T 018
Crimp tool BNC, for CT125RBS (barrel)	T 019
Crimp tool BNC, for CT125RBS (pin)	T 020
Crimp tool BNC, for Mini RG59	T 022
Crimp tool BNC, for CT125PE	T 023
Crimp tool BNC, for RG11	T 017
Crimp tool, BNC, for RG179	T 024
Crimp tool BT, 4 way/6 way	T 006
E&J 2A insertion tool	T 008
Insertion tool, plastic	T 025
Co-ax cable stripper 3 blade	T 010
Co-ax cable stripper, universal	T 009
Cyclops cable stripper	T 011

Cable Ties - packed in bags of 100.

4" (100mm x 2.5mm) black	<i>Order Ref.</i> F 001B
4" (100mm x 2.5mm) white	F 001W
6" (140mm x 3.6mm) black	F 002B
6" (140mm x 3.6mm) white	F 002W
8" (200mm x 3.6mm) black	F 003B
8" (200mm x 3.6mm) white	F 003W
12" (295mm x 4.8mm) black	F 005B
12" (295mm x 4.8mm) white	F 005W

Drop wire equipment

Dropwire bracket no. 22	<i>Order Ref.</i> F 011
Dropwire clamp no. 10	F 010
Extended dropwire bracket no. 32	F 013
Dropwire tensioner	F 012
Catenary wire available to special order.	



TECHNICAL ADVICE - TELEPHONE 01733 311 592

SECTION 7 - Fibre Optic Cables

FIBRE OPTIC CABLES – we offer the following types of fibre cable, cut to length with up to 48 fibre available for next day delivery.

Tight buffered	<p>short/medium distance general purpose cables 4 core – 72 cores Internal use LSOH/PVC sheaths Versions: OM1, OM2, OM3 ,OM4, Singlemode</p>
Single loose tube	<p>distribution and general purpose cables 4 core – 24 cores Internal/external use LSOH/PE sheaths Versions: OM1, OM2, OM3 ,OM4, Singlemode</p>
Multi loose tube	<p>long distance telephone, CATV and data cables 4 core – 432 cores Direct burial and duct use Armoured versions CST and SWA PVC/HFFR sheaths Versions: OM1, OM2, OM3, OM4, Singlemode</p>
Loose tube CST	<p>corrugated steel tape armour 4 core – 24 cores Internal/external use Direct burial and duct use LSOH/PE sheaths Versions: OM1, OM2, OM3, OM4, Singlemode</p>
Loose tube SWA	<p>steel wire armour 1 core – 48 cores External use Direct burial and hazardous environment use LSOH/PVC/PE sheaths Versions: OM1, OM2, OM3, OM4, Singlemode</p>
Pre-terminated fibre	<p>supplied with pulling socks as standard Tight buffered or loose tube cable Internal/external or armoured (SWA/CST/SWB) Cores: 4,8,12,16,24,48,72 and 96 Connectors: ST, SC, LC, FC Length: as per customer requirement Versions: OM1, OM2, OM3, OM4, Singlemode</p>



We can also quote for: Breakout cable, Fire resistant cable, Tight buffered SWB cable, Flat twin cable, Duplex zipcord cable

SECTION 7 - Fibre Optic Products

E&J

Services Limited

Patchcords – supplied individually bagged with test certificate, manufactured using duplex, simplex or flat twin cable and available in any of the following combinations:

Standard lengths from stock, in metres: 1, 2, 3, 5, 10, 15, 20, 25, 30

Connectors: SC, ST, FC, LC, MTRJ, MU

Colours: Singlemode OS1 - yellow
62.5/125 OM1 – grey, orange
50/125 OM2 – orange
50/125 OM3/OM4 - aqua



Pigtails – supplied individually bagged with test certificate, 1 metre long, 900um buffered fibre, for fusion or mechanical splicing onto fibre optic cable.

Sheath: semi tight buffer (easy strip) or tight buffer

Connectors: ST, SC, FC, LC

Version: Singlemode, OM1, OM2, OM3, OM4



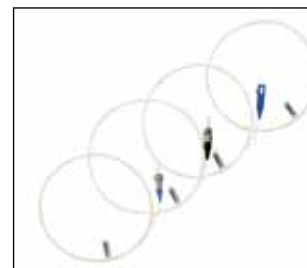
Patch Panels – 1u front sliding or 2u fixed panels, supplied with fixing kit and cable entry gland. 19" rack mount, unloaded or loaded with ST, SC, SC Duplex, FC, LC adaptors. Singlemode versions available also.

1u, 24 port ST front sliding, unloaded panel, black

1u, 24 port ST front sliding, black, loaded with 4,8,12,16 or 24 ST MM adaptors

2u, 48 port ST fixed, unloaded panel, beige

2u, 48 port ST fixed, beige, loaded with 32,36 or 48 ST MM adaptors



SC simplex, SC duplex, LC and FC also available, call for details and pricing.

Patch Boxes – for wall, desk or underfloor installation. ST, SC and FC versions. Supplied with 4 cable clips and cable entry glands

4 way wall mount box with 4 ST MM adaptors

8 way wall mount box with 8 ST MM adaptors

16 way wall mount box with 16 ST MM adaptors

Boxes can be supplied unloaded in 4,8,16 way versions

FC and SC Duplex versions available in same configurations.



Media Converter – extend 10Base-T and 100Base-TX LAN signals from copper structured wiring over multimode or singlemode fibre.

10-100 multimode media converter, ST adaptor

10-100 singlemode media converter, ST adaptor

10-100 multimode media converter, SC adaptor

10-100 singlemode media converter, SC adaptor



Fibre products – we can also quote for:

Connectors – individual or in packs of 100, Adaptors – multimode and singlemode,

External splice kits, Fusion splicers and Consumables.



PRIORITY ORDER LINE - 01733 311 592

SECTION 8 - New Products - Wireless



Wireless point-point links – supplied as a complete link in a box, with 12 months advanced replacement warranty. Line of sight required, transmission distances up to 20Km, rapid install and set up. Technical advice and back up available.

Trinity 116M inc. 1 year advanced replacement warranty
 Trinity 116M Plus inc. 1 year advanced replacement warranty
 Trinity 323TDD inc. 1 year advanced replacement warranty
 Trinity 323TDD Plus inc. 1 year advanced replacement warranty

Order Ref
 REP 116M
 REP 116M+
 REP 323
 REP 323+

3 and 5 year warranties available if taken out within first 12 month period.

Trinity 116-M



A preconfigured link kit that is ready to bridge traffic out of the box.

Operating in the 5 GHz unlicensed band with a throughput up to 100 Mbps the Trinity-116M is designed to reliably transport your data, voice and video communication.

Advanced Spectrum Analyser with Intelligent Frequency Selection.

The frequency interference graph provides the network operator an efficient tool to help analyze the spectrum.

Product Highlight

- 50 or 100 Mbps throughput
- 16 dBi Dual Polarized 5 GHz antenna
- Build-in RF ESD/Surge protection up to 15 kV
- Repeatit Cloud Network Management
- Speed test
- Advanced spectrum analyser
- QoS: Four traffic classes prioritise traffic

Distance	Trinity-116M	Trinity-116M Plus
< 2 km	50 Mbit	100 Mbit
3 km	50 Mbit	100 Mbit
4 km	40 Mbit	100 Mbit
5 km	35 Mbit	100 Mbit
6 km	30 Mbit	90 Mbit
7 km	28 Mbit	85 Mbit
8 km	25 Mbit	75 Mbit
9 km	23 Mbit	60 Mbit
10 km	15 Mbit	60 Mbit

Throughput UDP, 30dB max ETSI EIRP, 6dB margin

General	Trinity-116M
Radio	
Frequency Bands	5.150 – 5.845 GHz
Channel bandwidth	20 MHz; 20/40 MHz (Plus)
Capacity	50 Mbps; 100 Mbps (Plus)
Modulation	OFDM, BPSK, QPSK, 16QAM, 64QAM
Max Tx power	23 dBm
Max Rx sensitivity	-97 dBm
Error Correction	FEC; k=1/2, 2/3, 3/4, 5/6
Encryption	128 bit AES & MAC level Authentication
Surge Protection	15kV
DFS	Yes
QoS	Four Access Categories (AC) Voice, Video, Best Effort, and Background. Traffic classification according to WMM
Ethernet Interface	
Type	10/100BaseT Interface with Auto-negotiation (IEEE 802.3)
Number of Ethernet Ports	1
Framing/Coding	IEEE 802.3u
Traffic Handling	MAC layer bridging, self learning, 802.1q transparent
Data Latency	< 2ms (typical)
VLAN ID for Management	Supported
Power over Ethernet Connector	48V DC, 802.3af, < 6W typical RJ-45
Management	
Link Management	Web interface
NMS Application	Repeatit Cloud Network RCS Management Server
Tools in web interface	Spectrum Analyser, Speed Test

Specific	Trinity-116M
Antenna	Internal
Gain	typ. 16dBi
VSWR	max. 1.5:1
3 dB Beam-Width, H-Plane	typ. 20°
3 dB Beam-Width, V-Plane	typ. 20°
Polarization	Horizontal and Vertical
Antenna protection	Internal DC Grounding
Environment	
IP Code	IP63
Temperature	-40° / +55° C
Size	250 x 210 x 80 mm
Weight per unit	1.1 Kg

PRIORITY FAX LINE - 01733 344 775

SECTION 8 - New Products - Wireless

E&J

Services Limited

Trinity-323TDD



	Trinity-323TDD	Trinity-323TDD Plus
Radio		
Frequency Bands	5.150 – 5.845 GHz	5.150 – 5.845 GHz
Channel widths supported	10/20 MHz	10/20/40 MHz
Capacity	100 Mbps	190 Mbps
Duplex Technique	TDD	TDD
Modulation	OFDM, BPSK/QPSK/16QAM/64QAM	OFDM, BPSK/QPSK/16QAM/64QAM
Max Tx Power	23 dBm	23 dBm
Max Rx sensitivity	-97 dBm	-97 dBm
Error Correction	FEC; k=1/2, 2/3, 3/4, 5/6	FEC; k=1/2, 2/3, 3/4, 5/6
Encryption	128 bit AES & MAC level Authentication	128 bit AES & MAC level Authentication
Surge Protection	15kV	15kV
Antenna Protection	Internal DC Grounding	Internal DC Grounding
DFS	Yes	Yes
QoS	Four Access Categories (AC) Voice, Video, Best Effort, and Background Traffic classification according to WMM	Four Access Categories (AC) Voice, Video, Best Effort, and Background Traffic classification according to WMM
Bandwidth control	Yes	Yes
Internal Antenna		
Gain	typ. 23 dBi	typ. 23 dBi
VSWR	max. 1.5:1	max. 1.5:1
3 dB Beam-Width, H-Plane	7°	7°
3 dB Beam-Width, V-Plane	7°	7°
Polarization	Horizontal and Vertical	Horizontal and Vertical
Connector	N/A	N/A
Antenna Cable	N/A	N/A
Ethernet Interface		
Type	10/100/1000 BaseT Interface with Auto-negotiation (IEEE 802.3), Manual	10/100/1000 BaseT Interface with Auto-negotiation (IEEE 802.3), Manual
Number of Ethernet Ports	1	1
Framing/Coding	IEEE 802.3u	IEEE 802.3u
Traffic Handling	MAC layer bridging, self learning, 802.1q transparent	MAC layer bridging, self learning, 802.1q transparent
Data Latency	< 2ms (typical)	< 2ms (typical)
Packets/second	> 40 000	> 40 000
VLAN ID for Management	Supported	Supported
Power over Ethernet Connector	48V DC, 802.3af, <6W typical RJ-45	48V DC, 802.3af, <6W typical RJ-45
Management		
Link Management Protocol	Web interface SNMP	Web interface SNMP
NMS Application	Repeatit Cloud Network RCS Management Service	Repeatit Cloud Network RCS Management Service
Tools in web interface	Spectrum Analyser Speed Test	Spectrum Analyser Speed Test
Environment		
IP Code	IP65	IP65
Temperature	-40° / +55° C	-40° / +55° C
Size	370 x 370 x 40 mm	370 x 370 x 40 mm
Weight per unit	2.7 Kg	2.7 Kg

Distance	Trinity-323TDD	Trinity-323TDD Plus	Trinity-300TDD Plus
< 2 km	100 Mbit	190 Mbit	N/A
3 km	100 Mbit	190 Mbit	N/A
4 km	100 Mbit	190 Mbit	N/A
5 km	100 Mbit	185 Mbit	N/A
6 km	100 Mbit	180 Mbit	N/A
7 km	100 Mbit	125 Mbit	N/A
8 km	100 Mbit	124 Mbit	N/A
9 km	100 Mbit	122 Mbit	N/A
10 km	100 Mbit	120 Mbit	N/A
15 km	80 Mbit	80 Mbit	N/A
20 km	60 Mbit	60 Mbit	N/A

Throughput UDP, 30dB max ETSI EIRP, 6dB margin

e-mail: sales@eandjservices.co.uk

SECTION 8 - New Products - Power



POWER AND DATA TO THE DESK – a range of desk pods. Other variants available if required.

- Desk pod power & data unit – 2 power, 2 data
- Desk pod power & data unit – 2 power, 2 data, 2 USB
- Desk pod power & data unit – 4 power, 4 LJ6C cut-outs

- Order Ref
N001
N002
N003



POWER PROTECTION AND UPS

- Surge protector with indicator, 4 way, 2 metre lead
- Surge protector with indicator, 4 way, 5 metre lead
- Surge protector with indicator, 6 way, 2 metre lead
- Surge protector with indicator, 6 way, 5 metre lead
- Surge protector with indicator, 10 way, 2 metre lead

- Order Ref
N 010
N 011
N 012
N 013
N 014



- 850VA/600W UPS/filter/surge protector
- 850VA Powerstar managed line interactive UPS
- 1.2KVA Powerstar line interactive UPS
- 1.7KVA Powerstar line interactive UPS
- 1 KVA Powergem Pro on-line tower UPS
- Battery cabinet for 1KVA UPS
- 2 KVA Powergem Pro on-line tower UPS
- Battery cabinet for 2KVA UPS
- 3 KVA Powergem Pro on-line tower UPS
- Battery cabinet for 3KVA UPS

- N 020
N 021
N 022
N 022
N 023
N 023BC
N 024
N 024BC
N 025
N 025BC



HDMI Cables

- HDMI extension cable, 18 pin, M-F, 2 metre
- HDMI extension cable, 18 pin, M-F, 3 metre
- HDMI extension cable, 18 pin, M-F, 5 metre
- HDMI extension cable, 18 pin, M-F, 10 metre

- Order Ref
X 014
X 015
X 016
X 017

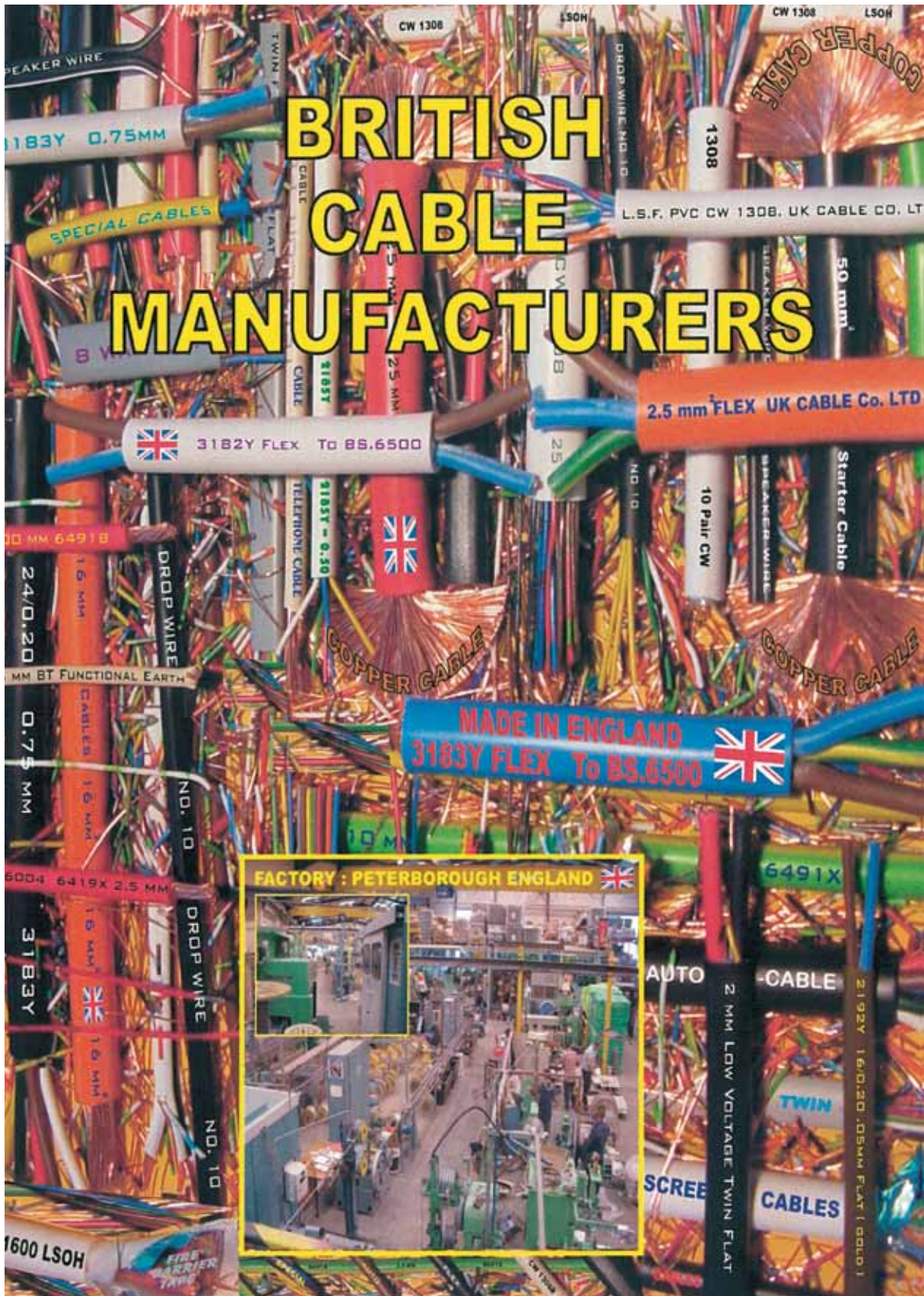


- Other variants available including :
- HDMI- DVI-D (18+1 pin) M-M
 - HDMI – HDMI + Ethernet cable (19 pin) M-M
 - HDMI plug- DVI-D plug/socket adaptors
 - HDMI repeater/extender



ORDER BEFORE 4pm - FOR SAME DAY DESPATCH

SECTION 9 - Cable Manufacture



TECHNICAL ADVICE - TELEPHONE 01733 311 592

SECTION 9 - Cable Manufacture



Other Drop Wires Available



Internal Telephone Cables CW 1308

CONDUCTOR:	1/0.5mm plain annealed copper
SPECIFICATION:	Manufactured to British Telecom Specification CW 1308
INSULATION:	PVC, colour coded, ring mark
MAKE - UP	1 pair to 100 pair (optional earth)
EARTH WIRE	1/0.38 Plain Copper PVC Insulated
SHEATH COLOURS:	White / Black / Grey / Cream

Drop Wire No. 10 Specification CW 1378

CONDUCTOR:	1/0.5mm plain annealed copper
SPECIFICATION:	Manufactured to British Telecom Specification CW1378A
INSULATION:	PVC
CORE COLOURS	Orange / White / Green / Black)
STRENGTH MEMBERS	Brass Covered Steel -PVC Insulated
OUTER SHEATH	Polyethylene

Jumper Wire Cw1257 CW1423 CW1109

CONDUCTOR:	1/0.5mm plain annealed copper
SPECIFICATION:	Manufactured to British Telecom Specification CW1257 CW1423 CW1109
INSULATION	CW1257 Radiation Cross Link PVC CW1423 Supercede the Above CW1109 Standard PVC
MAKE - UP	2 Wire - and - 4 Wire

Functional Earth Wire To CW 1044B

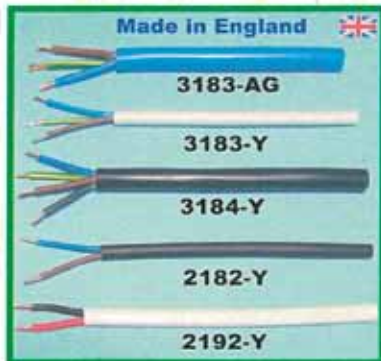
CONDUCTOR:	Single Core Annealed Copper Solid or Stranded Conductor
SPECIFICATION:	Manufactured to British Telecom Specification CW 1044B
INSULATION:	PVC
MAKE - UP	1.5mm To 25mm PVC Sheath Cream
EARTH WIRE	1/0.38 Plain Copper PVC Insulated
SHEATH COLOURS:	Cream PVC Sheath Printing With Black Characters

PVC Single Core To BS6004 & BS6500

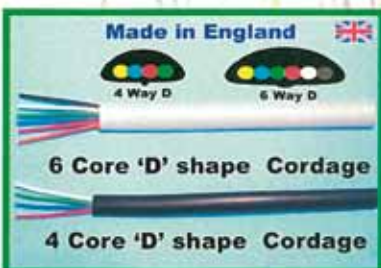
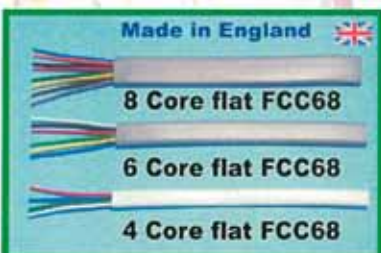
CONDUCTOR:	Single Plain Annealed Solid or Stranded Copper Conductors
SPECIFICATION:	Manufactured to BS 6500 (0.5mm to 1.0mm) and BS6004 (1.5mm to 4.0mm)
INSULATION:	PVC OR LSOH
VOLTAGE RATING:	300 / 500V, 450 / 750V
SIZES:	0.5mm ² to 4.00mm ²
COLOURS:	Available in a Variety Colours

SCHEDULED & CALL-OFF ORDERS WELCOME

SECTION 9 - Cable Manufacture



Heat Resisting Flexible



PVC Flexible Mains Cords & Cables

CONDUCTOR:	Plain annealed copper conductor
SPECIFICATION:	Manufactured to BS 6500
INSULATION:	PVC
VOLTAGE RATING:	300/500V
CORES:	2 Core Oval 2,3,4,5 Core Round
SIZES:	0.5mm to 2.5mm
SHEATH COLOURS:	Black, Grey, White or Orange

Heat Resisting (85° C or 105° C) Security / Alarm / Cables

CONDUCTOR:	7/0.20mm - Tinned Annealed copper
SPECIFICATION:	Manufactured to BS 4737 (section 3.30)
INSULATION:	PVC / POLY
VOLTAGE:	Maximum operating voltage 50 r.m.s
MAKE - UP	4 , 6 , 8 , & 12 cores
SHEATH COLOURS:	WHITE / BROWN / BLACK

Flexible Figure '8' Speaker Cables

CONDUCTOR:	Plain annealed copper conductor
SPECIFICATION:	Manufactured To BS6141
INSULATION:	PVC
VOLTAGE RATING:	300/300V
SIZES:	7/0.20 13/0.20 28/0.15 42/0.15 24/0.20 32/0.20 42/0.20 79.020
COLOURS:	White, Grey, Black, with tracers

Telephone Cordage Flat FCC68 SBS1620

CONDUCTOR:	7/0.15 Tinned annealed copper
SPECIFICATION:	FCC 68 and SBS 1620
INSULATION:	PVC or Polypropylene
MAKE - UP	4, 6 and 8 cores Conductors are laid up in a parallel fashion with a pvc outer sheath With a flat cross section
SHEATH COLOURS:	Grey / Ivory / White / Black

Telephone Cordage 'D' Shape

CONDUCTOR:	Duplex/Simlex or 7/0.15 Tinned
SPECIFICATION:	CW 1311 - CW1630 - CW 1690
INSULATION:	PVC or Polypropylene
MAKE - UP	4, 6 and 8 core Conductors are laid up in a parallel fashion with a pvc outer sheath With a 'D' Shape cross section
SHEATH COLOURS:	Grey / Ivory / White / Black

TECHNICAL INFORMATION

E&J

Services Limited

Table 1. American wire gauge (AWG) and UK equivalents (SWG)

Gage (AWG)	Stranding (nom. AWG)	Min. average O.D. of strand	Approximate O.D.		Max. resistance Ohms/1,000ft	UK Equivalent
			Inches	m.m.		
28	7/36	.0048	.015	.381	70.7	
28	19/40	.0029	.016	.406	70.7	
26	7/34	.0060	.019	.483	44.4	7/0.15
26	10/36	.0050	.021	.553	44.4	
26	19/38	.0036	.020	.508	44.4	
24	7/32	.0076	.024	.610	27.7	7/0.2
24	10/34	.0064	.024	.584	27.7	
24	19/36	.0046	.024	.610	27.7	
24	42/40	.0031	.023	.584	27.7	
22	7/30	.0096	.030	.762	17.5	7/0.25
22	19/36	.0058	.031	.787	17.5	
22	26/36	.0050	.030	.762	17.5	
20	7/28	.0126	.037	.890	10.9	16/0.2
20	10/30	.0101	.037	.890	10.9	
20	19/32	.0073	.037	.940	10.9	
20	26/34	.0063	.036	.914	10.9	
20	42/36	.0049	.036	.914	10.9	
18	7/26	.0152	.048	1.22	6.92	24/0.2
18	16/30	.0101	.047	1.20	6.92	
18	19/30	.0092	.049	1.24	6.92	
18	42/34	.0062	.047	1.20	6.92	
18	65/36	.0050	.047	1.20	6.92	
16	7/24	.0192	.060	1.52	4.35	30/0.25
16	19/29	.0117	.058	1.47	4.35	
16	26/30	.0100	.059	1.50	4.35	
16	65/34	.0063	.059	1.50	4.35	
16	105/36	.0050	.059	1.50	4.35	
14	7/22	.0242	.076	1.85	2.73	50/0.25
14	19/26	.0147	.071	1.85	2.73	
14	42/30	.0099	.075	1.85	2.73	
14	105/34	.0063	.075	1.85	2.73	

Conductor cross sectional area. Square mm	Current carrying capacities Amps	Volt drop per Amp per metre, d.c./ single phase		Volt drop per Amp per metre, d.c./ three phase	
		a.c.	mV	a.c.	mV
0.50	3		83		72
0.75	6		56		48
1.00	10		43		37
1.50	15		31		26
2.50	20		18		16
4.00	25		11		9.6

Information provided in this section is given in good faith and is correct to the best of our knowledge however no warranty is given or to be implied with regard to this information

PRIORITY ORDER LINE - 01733 311 592

TERMS & CONDITIONS



The small print E&J SERVICES LTD

E&J Manufacturing Ltd. shall hereafter be called the Vendor. The customer shall mean the person, company or organisation agreeing to purchase goods or services from the Vendor. Goods shall mean equipment, spare parts, repairs or services provided by the Vendor.

1. Unless expressly agreed in writing all contracts for the supply of goods by the Vendor shall be subject to the terms and conditions printed below. Quotations are without engagement and are subject to goods/services being available at time of order.
2. Orders placed by purchasers new to the vendor will have to be on a "cheque with order" basis, alternatively credit cards may be accepted.
3. The property in the goods shall remain with the vendor until such time as the goods are paid for in full by the Customer. Until payment is made the Customer shall hold the goods on trust for the Vendor, be responsible for any damage incurred and clearly identify the goods as belonging to the Vendor. If the goods have been re-sold before the property in the goods has passed to the customer, beneficial entitlement shall be attached to the proceeds of the re-sale and the Vendor reserves the right to enter upon any premises where the goods are stored (or assumed to be stored) and repossess same.
4. Carriage shall be charged on all orders or separate deliveries under £500 net value. Orders over £500 net will be carriage free U.K. mainland, unless a specific delivery time is requested when a full charge will be imposed.
5. Time/date given for delivery by the vendor is given in good faith, no liability will be accepted for late or non-delivery of goods.
6. Goods delivered in damaged condition should be "refused" by the Customer. Where there is non-delivery, short-delivery or goods damaged on delivery, claims should be made in writing to the Vendor within 3 working days of the invoice date.
7. The Vendor guarantees its goods and services for 12 months, unless the goods carry another manufacturer's own guarantee. Goods may only be returned with the express permission of the Vendor and at the customer's expense. All returned goods should be sent with a returns note stating reason for return/nature of fault.
8. Goods acquired specially on behalf of the Customer may only be returned if the Vendor's supplier has agreed to take the goods back.
9. All returned goods will be subject to a handling charge of 25% unless otherwise agreed. All cancelled orders will be subject to a cancellation charge equal to 25% of the returned order value unless otherwise agreed.
10. All return of goods must be authorised in advance of return by issuance of an RMA (Return Materials Authorisation) number by the Vendor. Credit notes will not be issued unless an RMA has been requested and allocated.
11. Payment of invoices, by credit account Customers, is to be made by the end of the month following the month in which the goods are supplied (30 days net month end) unless otherwise authorised. Late payment may result in suspension of supply, recovery of goods already supplied and not paid for or the whole of the account becoming due and payable.
12. Interest may be charged on overdue invoices, in which case interest will accrue from the date when payment becomes due from day to day until the date of payment. The rate of interest shall be 4% per month on the whole outstanding invoice total, accruing at such rate as well as before any judgement in law.
13. Under no circumstances will the Vendor accept any liability for consequential damages or loss arising from goods supplied by the vendor, as requested by the Customer or as recommended by the Vendor.
14. Quotations are given subject to the vendor being able to purchase/obtain the specific goods. Price quoted refer to that quantity of goods and not necessarily to larger or smaller quantities.
15. Prices are subject to change without prior notice.
16. Specifications for goods are given by the Vendor in good faith, to the best of the vendor's knowledge and do not constitute a guarantee. Any liability from goods incorrectly specified by the Vendor shall be limited to replacement of goods up to the value of the goods originally supplied.
17. Force Majeure - the Vendor shall not be liable to the customer for any failure to perform its obligations due to circumstances beyond its control, including war, strikes, fire, failure of power supplies, delay caused by other manufacturers & suppliers, explosions, breakdowns, industrial disputes, floods, Government action or any action outside the vendor's reasonable control and Acts of God. In such event the Vendor may elect by written notice to cancel any agreement with the customer or elect to extend the time for performance so that performance can reasonably be effected.
18. The Vendor reserves the right to cancel any credit facilities where a breach of these conditions has taken place.
19. These Conditions of Sale shall be governed by and construed in accordance with English Law.

e-mail: sales@eandjservices.co.uk



CREDIT ACCOUNT APPLICATION FORM

COMPANY NAME & INVOICE ADDRESS:
.....
.....
.....

TELEPHONE NO: FAX NO:

E-MAIL:

COMPANY REG. NO.: VAT REG. NO:

CONTACT NAMES (purchasing)(accounts)

MAIN BUSINESS ACTIVITY:

LENGTH OF TIME COMPANY ESTABLISHED:

REGISTERED OFFICE ADDRESS (if different to invoice address)
.....
.....
.....

TRADE REFERENCE 1. NAME & ADDRESS TRADE REFERENCE 2. NAME & ADDRESS

.....
.....
.....

TELEPHONE NO: TELEPHONE NO:

FAX NO: FAX NO:

BANK NAME & ADDRESS: ACCOUNT NO:

SORT CODE:

CREDIT REQUIRED: £

The above information is given in confidence to enable you to open an account with E&J Services Ltd. I confirm I am duly authorised to open an account on behalf of the company and have read and accept the Terms and Conditions of Sale as printed in the E&J Services Ltd catalogue.

NAME (print)..... POSITION

SIGNATURE DATE

If business is a partnership please list on separate page names & addresses of all partners.

**PLEASE PHOTOCOPY THIS PAGE, COMPLETE AND RETURN VIA:
POST/FAX or SCAN TO E-MAIL**

E and J Services Limited
Environmental Statement.

E and J Services Ltd. will run efficient operations that minimise waste and reduce our contribution to climate change. Wherever possible we will promote sustainable development. We believe we have a responsibility to manage the impact of our operation on the environment so that any potential harm is minimised and there is the maximisation of any positive contributions.

At every stage of our products' life cycle, from sourcing of materials and components through transportation and onto ultimate delivery and use, we are endeavouring to find ways to reduce our carbon footprint. E and J Services Ltd. will continue to explore improvements in its environmental performance through efficient use of energy, water and packaging. Wherever possible we will promote the use of sustainable products.

Peterborough
June 2011.



E&J SERVICES LIMITED

E&J Warehouse
Unit 3, Stevern Way
Reynolds Industrial Park
Fengate
Peterborough
Cambridgeshire
PE1 5EL

Telephone: +44 (0)1733 311592

Facsimile: +44 (0)1733 344775

E-mail: sales@eandjservices.co.uk

www.eandjservices.co.uk